

# ORGANIZATIONAL CHARTS

BUNKER HILL COMMUNITY COLLEGE  
250 NEW RUTHERFORD AVENUE  
BOSTON, MA 02129-2925  
**JULY 8, 2024**

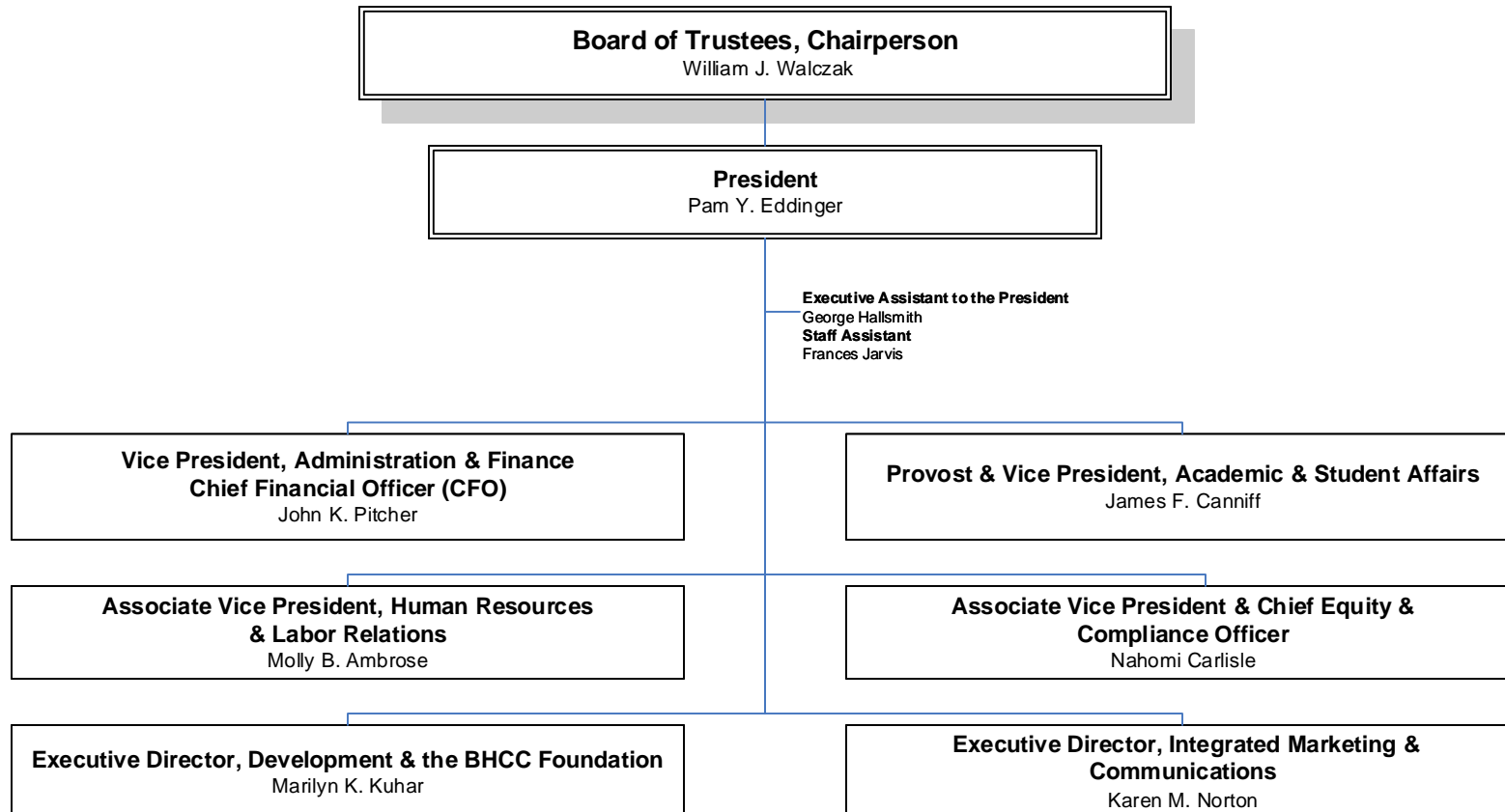
# TABLE OF CONTENTS

EXECUTIVE DIVISION		CHART 1		DIVISION OF ACADEMIC & STUDENT AFFAIRS ( <i>con't</i> )	
HUMAN RESOURCES		CHART 1A		ACADEMIC AFFAIRS (RESEARCH & ASSESSMENT)	CHART 20
INTEGRATED MARKETING & COMMUNICATIONS		CHART 1B		COLLEGE EVENTS & CULTURAL PLANNING	CHART 2P
DEVELOPMENT & BHCC FOUNDATION		CHART 1C			
EQUITY AND COMPLIANCE OFFICER		CHART 1D			
DIVISION OF ADMINISTRATION & FINANCE		CHART 1E			
ADMINISTRATION & FINANCE		CHART 1F			
FACILITIES MANAGEMENT		CHART 1G			
STUDENT FINANCIAL SERVICES		CHART 1H			
GRANTS DEPARTMENT		CHART 1I			
PUBLIC SAFETY		CHART 1J			
INFORMATION SERVICES		CHART 1K			
DIVISION OF ACADEMIC & STUDENT AFFAIRS		CHART 2			
ASSOCIATE PROVOST-CHARLESTOWN		CHART 2A			
BEHAVIORAL, SOCIAL SCIENCES & GLOBAL LEARNING		CHART 2B			
HUMANITIES & LEARNING COMMUNITIES		CHART 2C			
STUDENT AFFAIRS		CHART 2D			
ACADEMIC SUPPORT & COLLEGE PATHWAY PROGRAMS		CHART 2E			
ONLINE LEARNING & INSTRUCTIONAL INNOVATION		CHART 2F			
LIBRARY & LEARNING COMMONS		CHART 2G			
ASSOCIATE PROVOST-CHELSEA		CHART 2H			
HEALTH SCIENCES		CHART 2I			
SCIENCE, ENGINEERING & MATHEMATICS		CHART 2J			
PROFESSIONAL STUDIES		CHART 2K			
CHELSEA CAMPUS-TRIO TALENT SEARCH PROGRAM		CHART 2L			
WORKFORCE & ECONOMIC DEVELOPMENT		CHART 2M			
ENROLLMENT MANAGEMENT & LIFEMAP		CHART 2N			

# BUNKER HILL COMMUNITY COLLEGE

## EXECUTIVE DIVISION

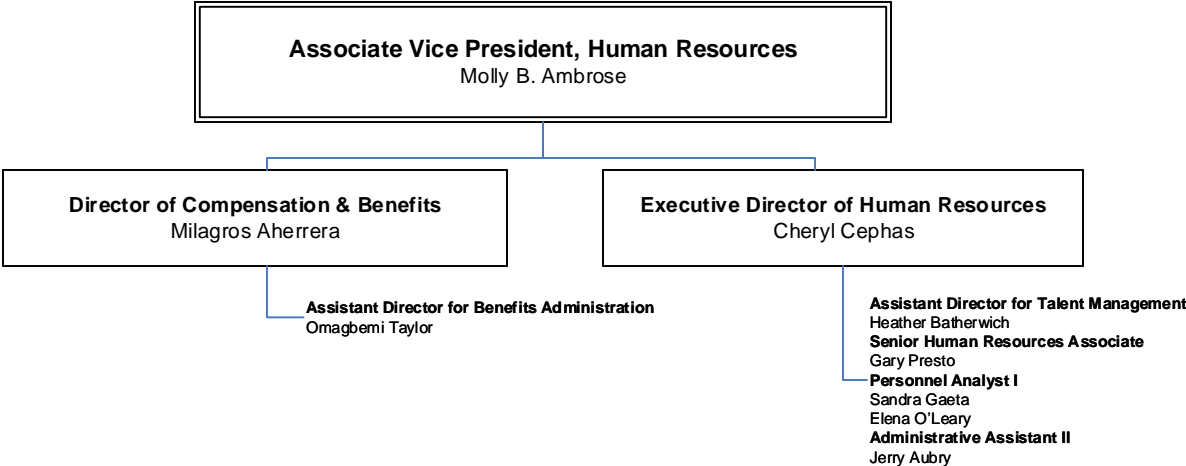
**Executive**  
Organizational Chart #1



# BUNKER HILL COMMUNITY COLLEGE

## EXECUTIVE DIVISION

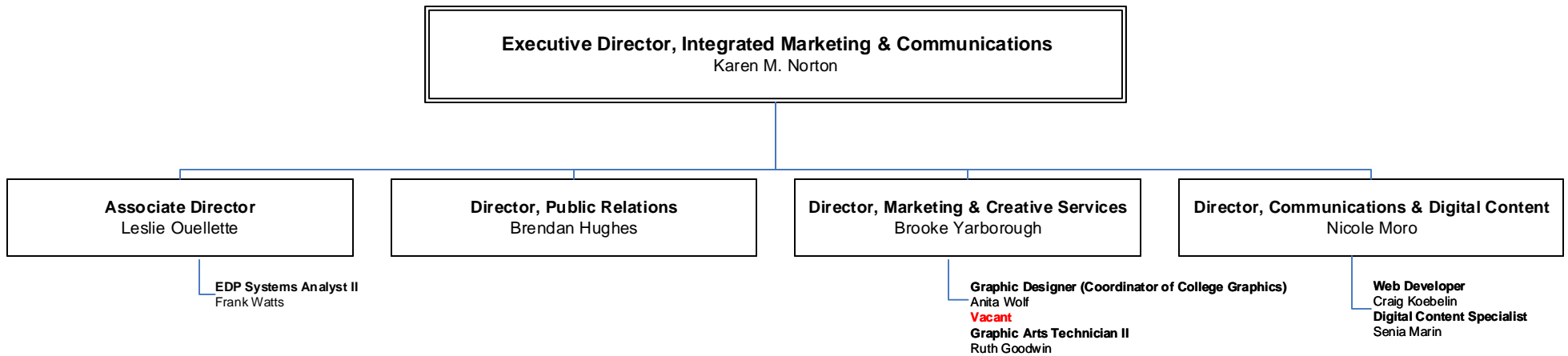
**Human Resources**  
Organizational Chart #1A



# BUNKER HILL COMMUNITY COLLEGE

## EXECUTIVE DIVISION

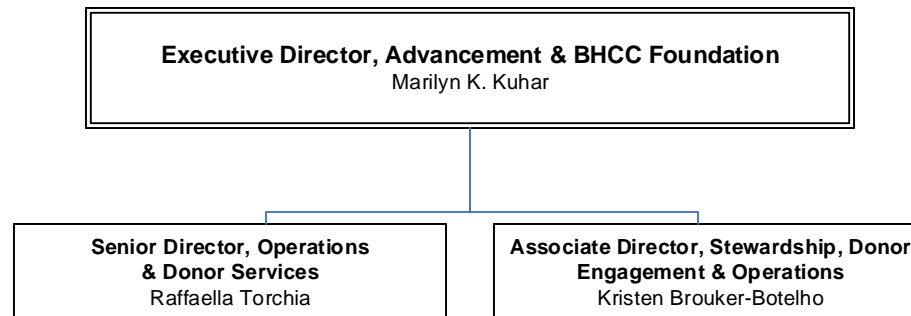
### Integrated Marketing & Communications Organizational Chart #1B



# BUNKER HILL COMMUNITY COLLEGE

## EXECUTIVE DIVISION

### Advancement & BHCC Foundation Organizational Chart #1C



# BUNKER HILL COMMUNITY COLLEGE

## EXECUTIVE DIVISION

**Equity & Compliance**  
Organizational Chart #1D

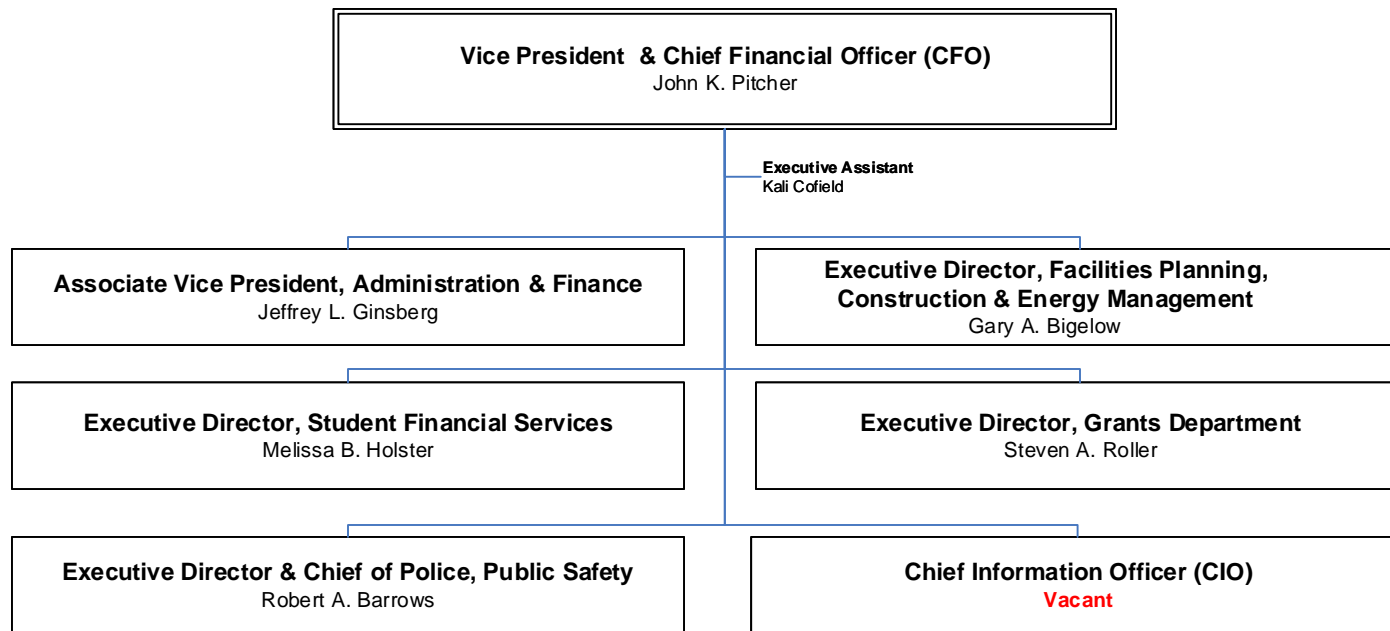
**Associate Vice President & Chief Equity & Compliance Officer**  
Nahomi Carlisle

Deputy for Equity and Title IX Coordinator  
**Vacant**

# BUNKER HILL COMMUNITY COLLEGE

## DIVISION OF ADMINISTRATION & FINANCE

### Administration & Finance Organizational Chart #1E



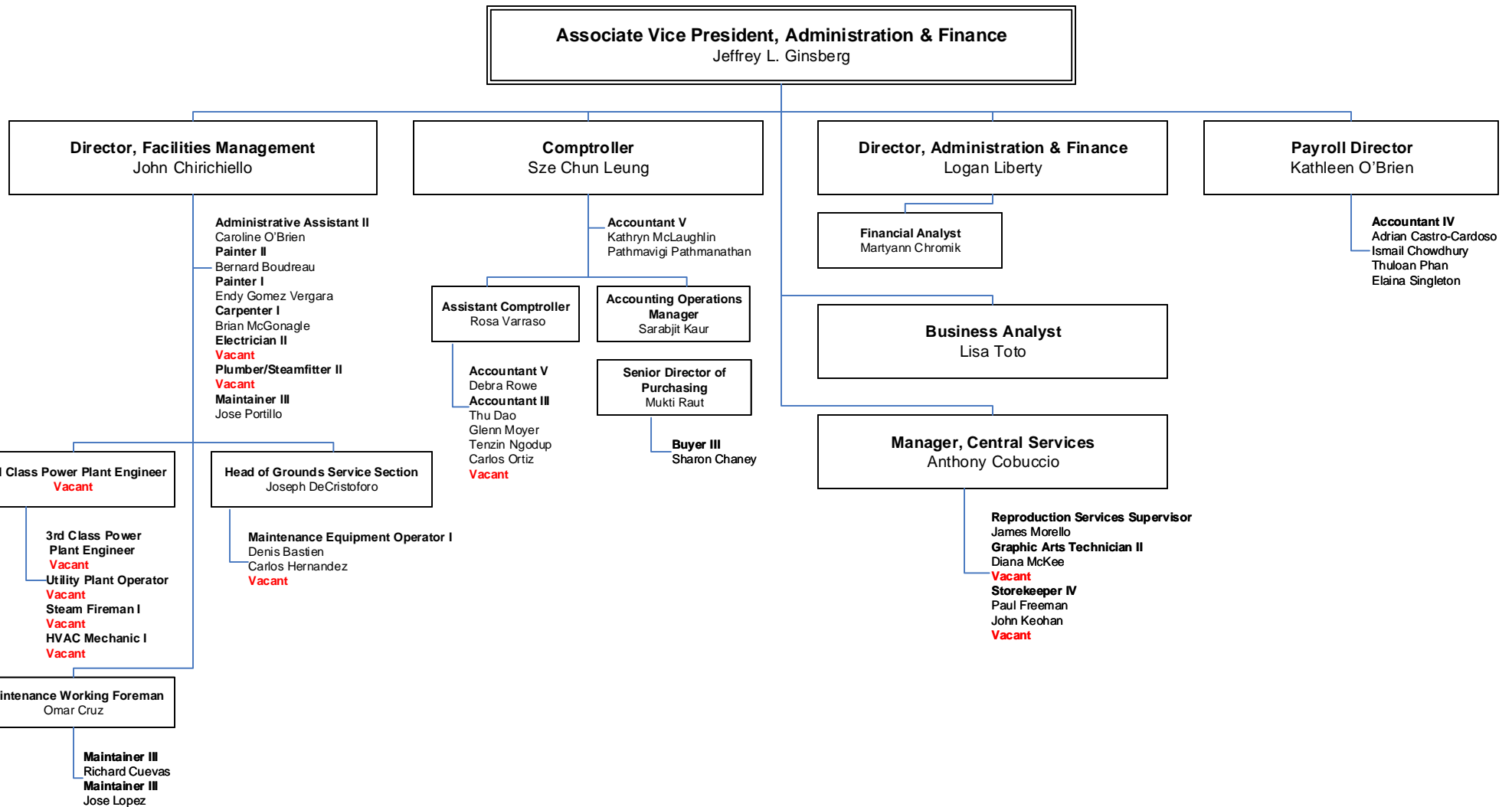


# BUNKER HILL COMMUNITY COLLEGE

## DIVISION OF ADMINISTRATION & FINANCE

### Administration & Finance

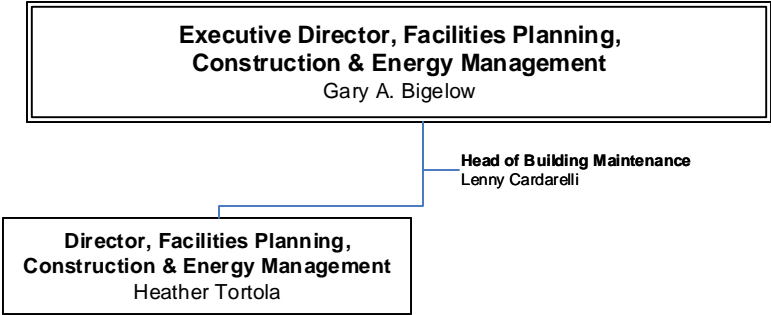
Organizational Chart #1F



# BUNKER HILL COMMUNITY COLLEGE

## DIVISION OF ADMINISTRATION & FINANCE

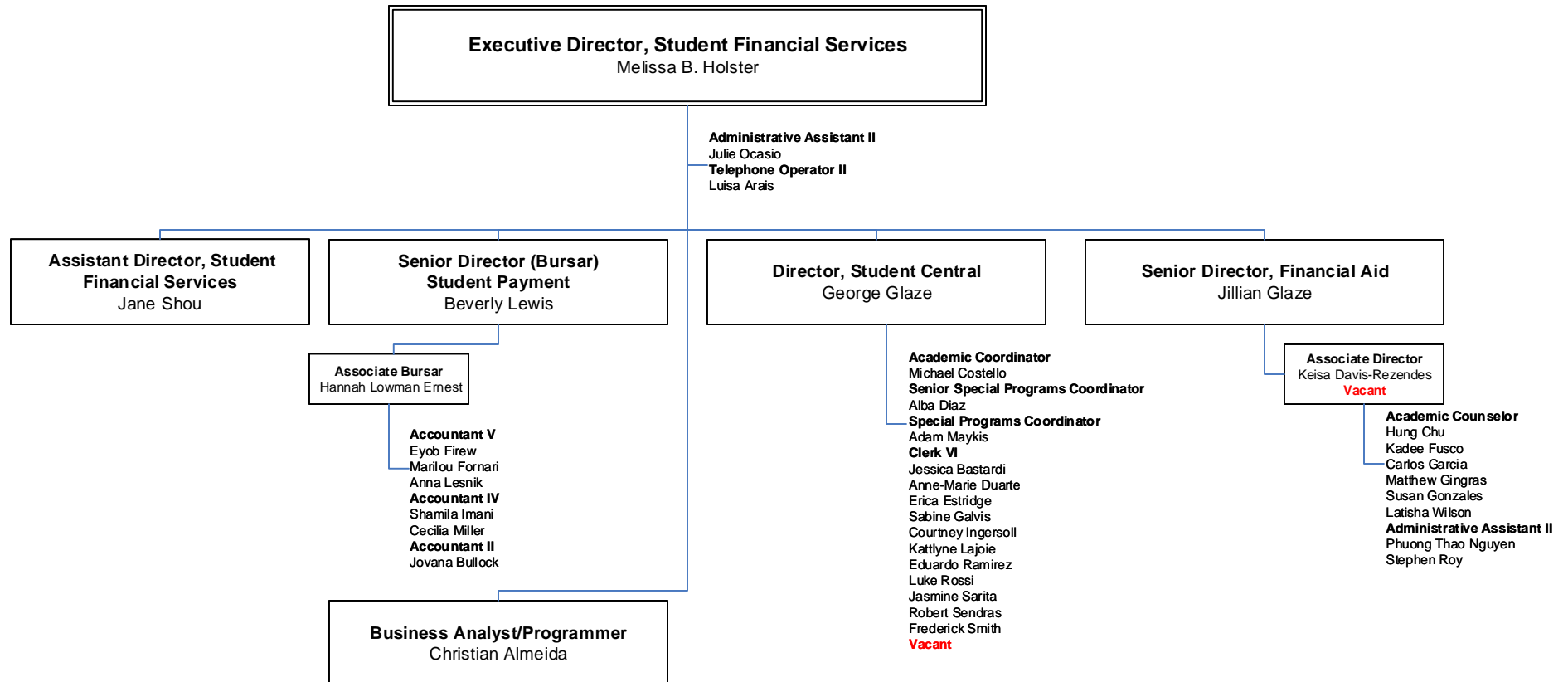
**Facilities Management**  
Organizational Chart #1G



# BUNKER HILL COMMUNITY COLLEGE

## DIVISION OF ADMINISTRATION & FINANCE

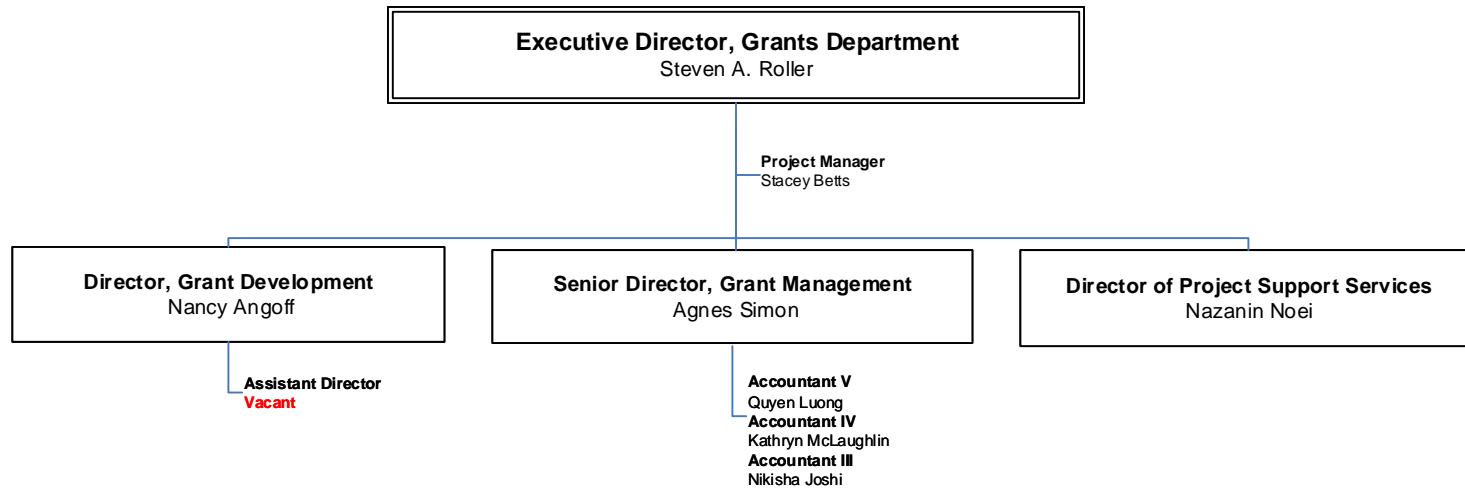
### Student Financial Services Organizational Chart #1H



# BUNKER HILL COMMUNITY COLLEGE

## DIVISION OF ADMINISTRATION & FINANCE

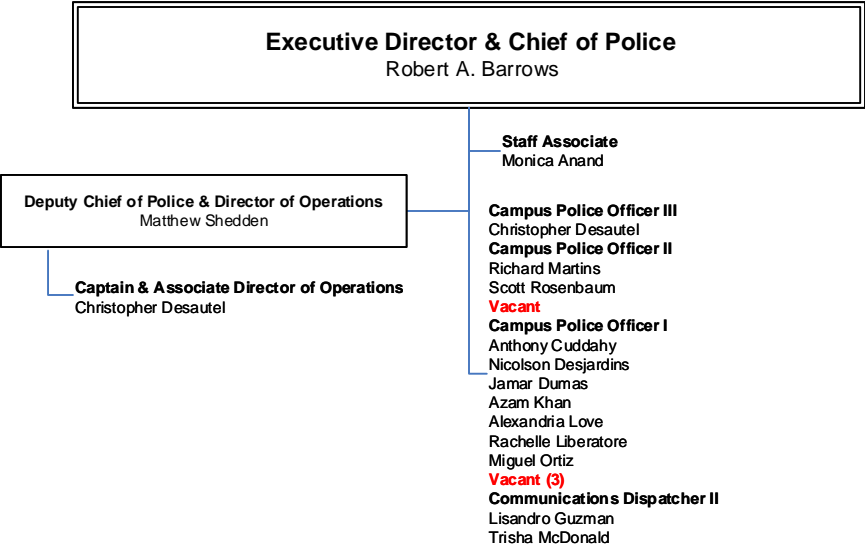
### Grants Department Organizational Chart #11



# BUNKER HILL COMMUNITY COLLEGE

## DIVISION OF ADMINISTRATION & FINANCE

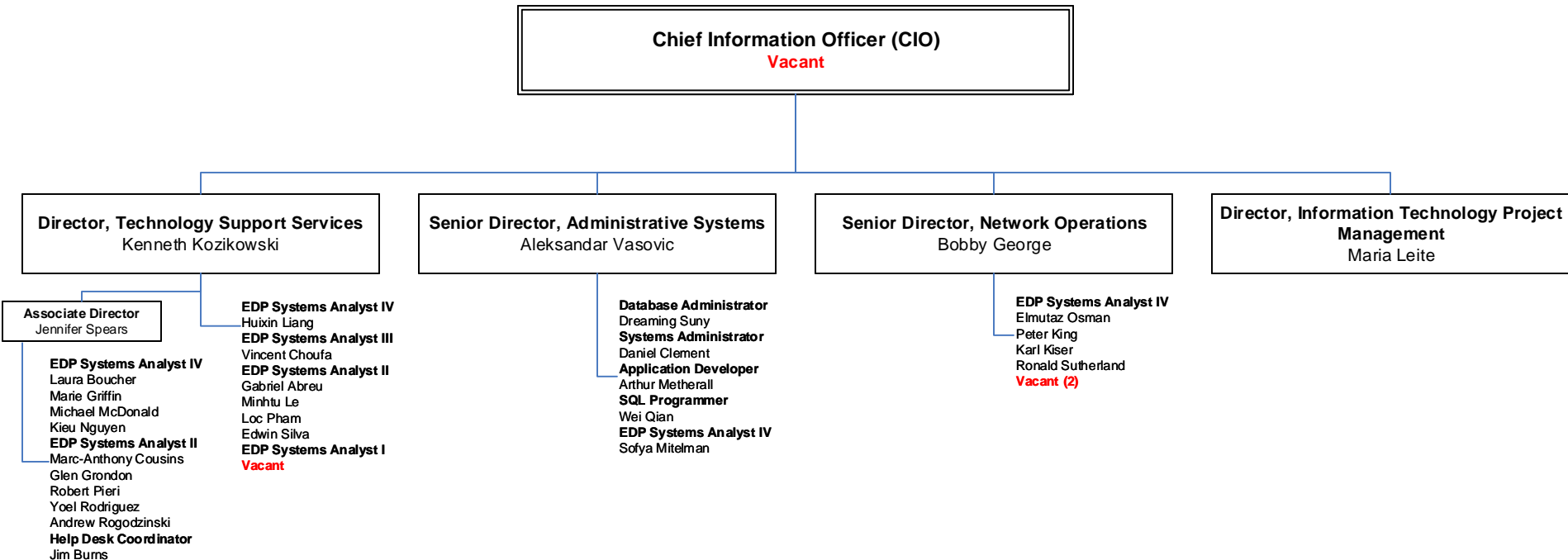
### Public Safety Organizational Chart #1J



# BUNKER HILL COMMUNITY COLLEGE

## DIVISION OF ADMINISTRATION & FINANCE

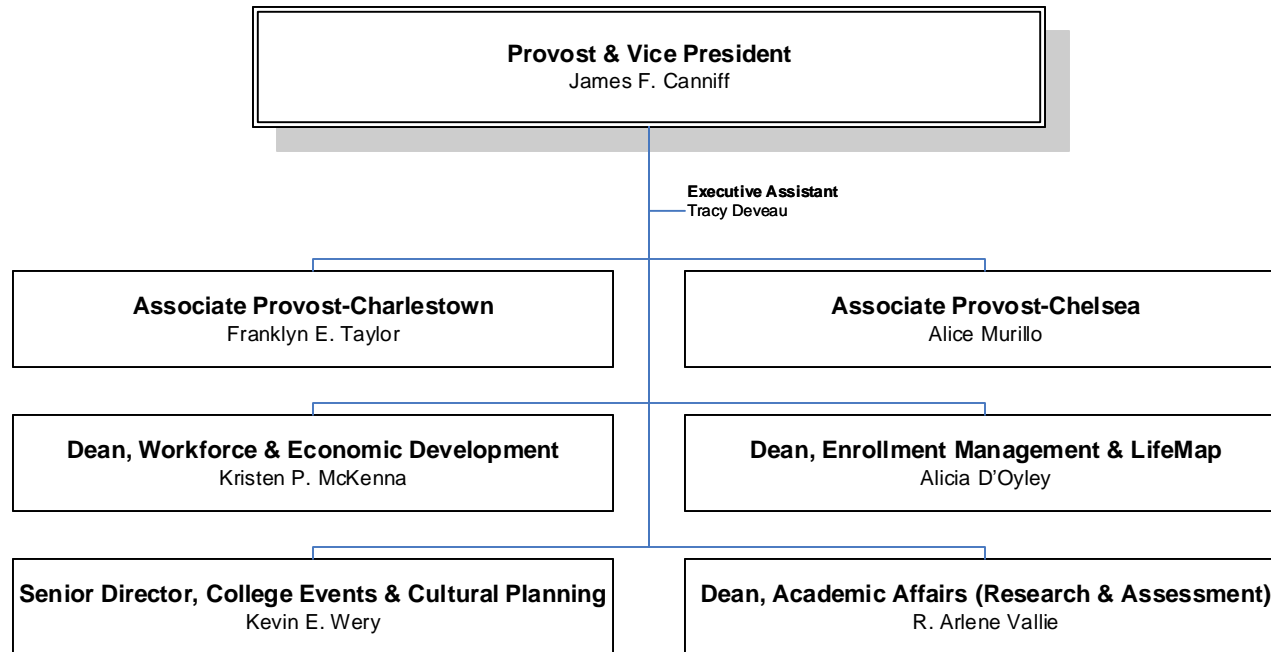
Information Services  
Organizational Chart #1K



# BUNKER HILL COMMUNITY COLLEGE

## DIVISION OF ACADEMIC & STUDENT AFFAIRS

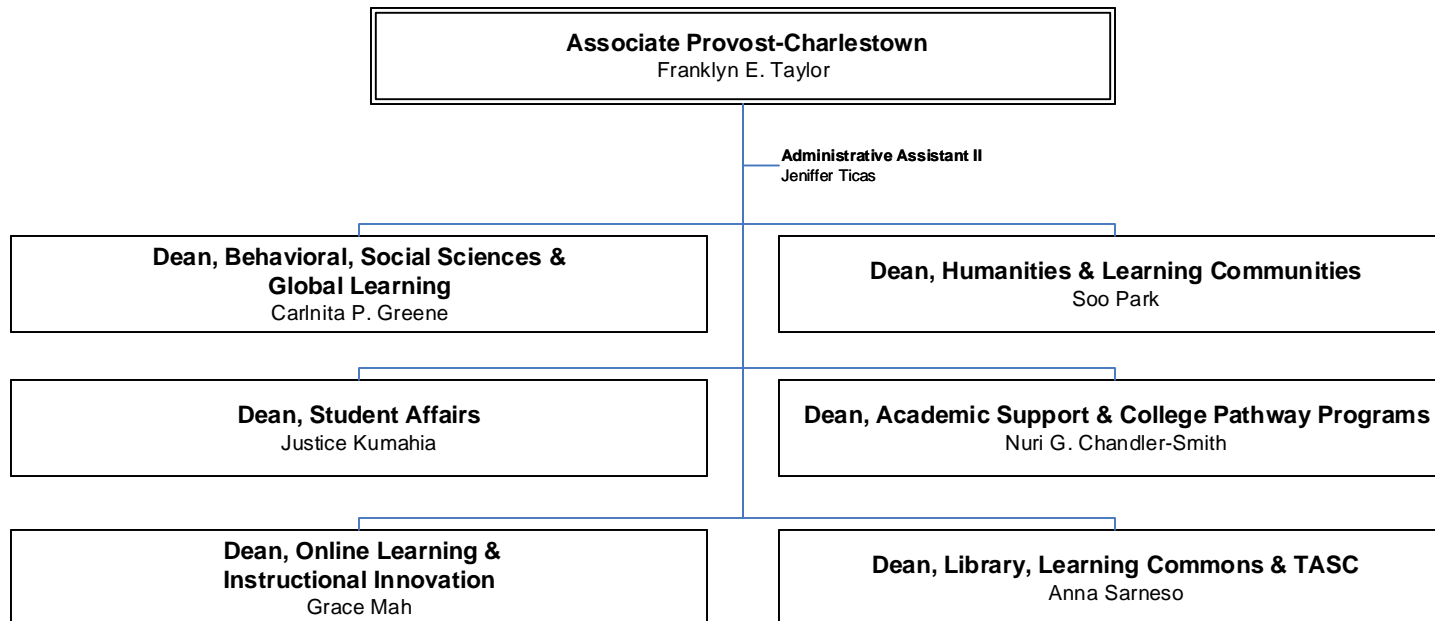
### Academic & Student Affairs Organizational Chart #2



# BUNKER HILL COMMUNITY COLLEGE

## DIVISION OF ACADEMIC & STUDENT AFFAIRS

**Associate Provost-Charlestown**  
Organizational Chart# 2A

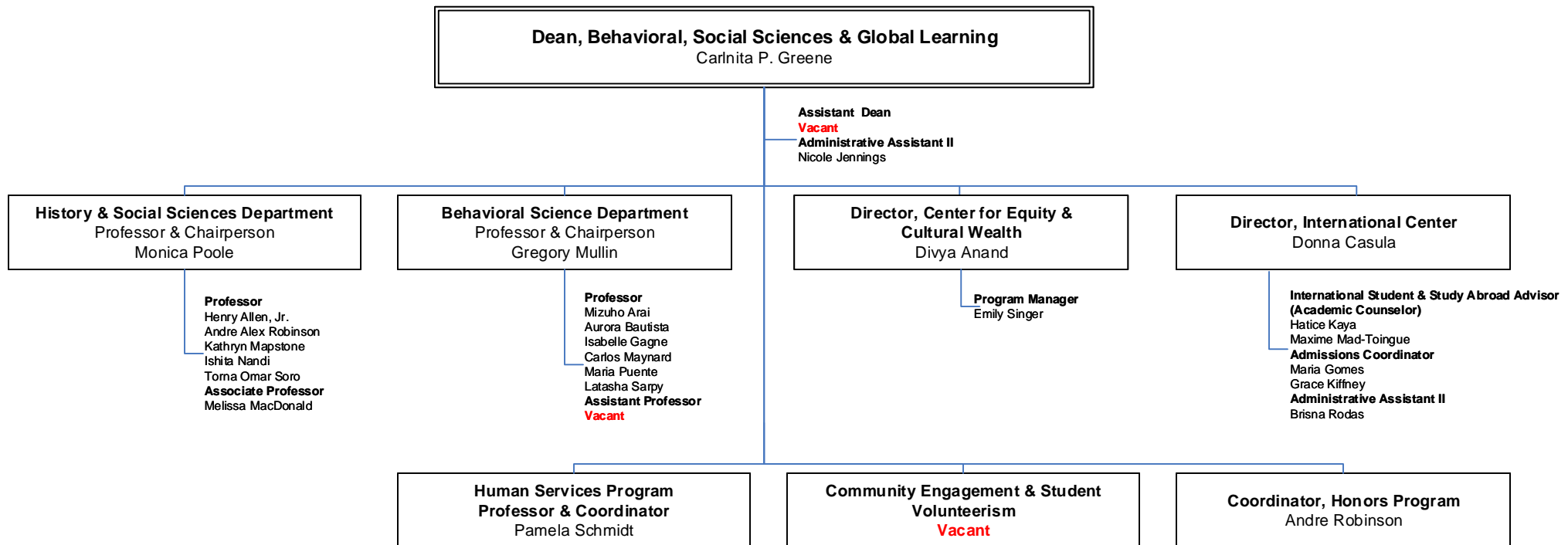




# BUNKER HILL COMMUNITY COLLEGE

## DIVISION OF ACADEMIC & STUDENT AFFAIRS

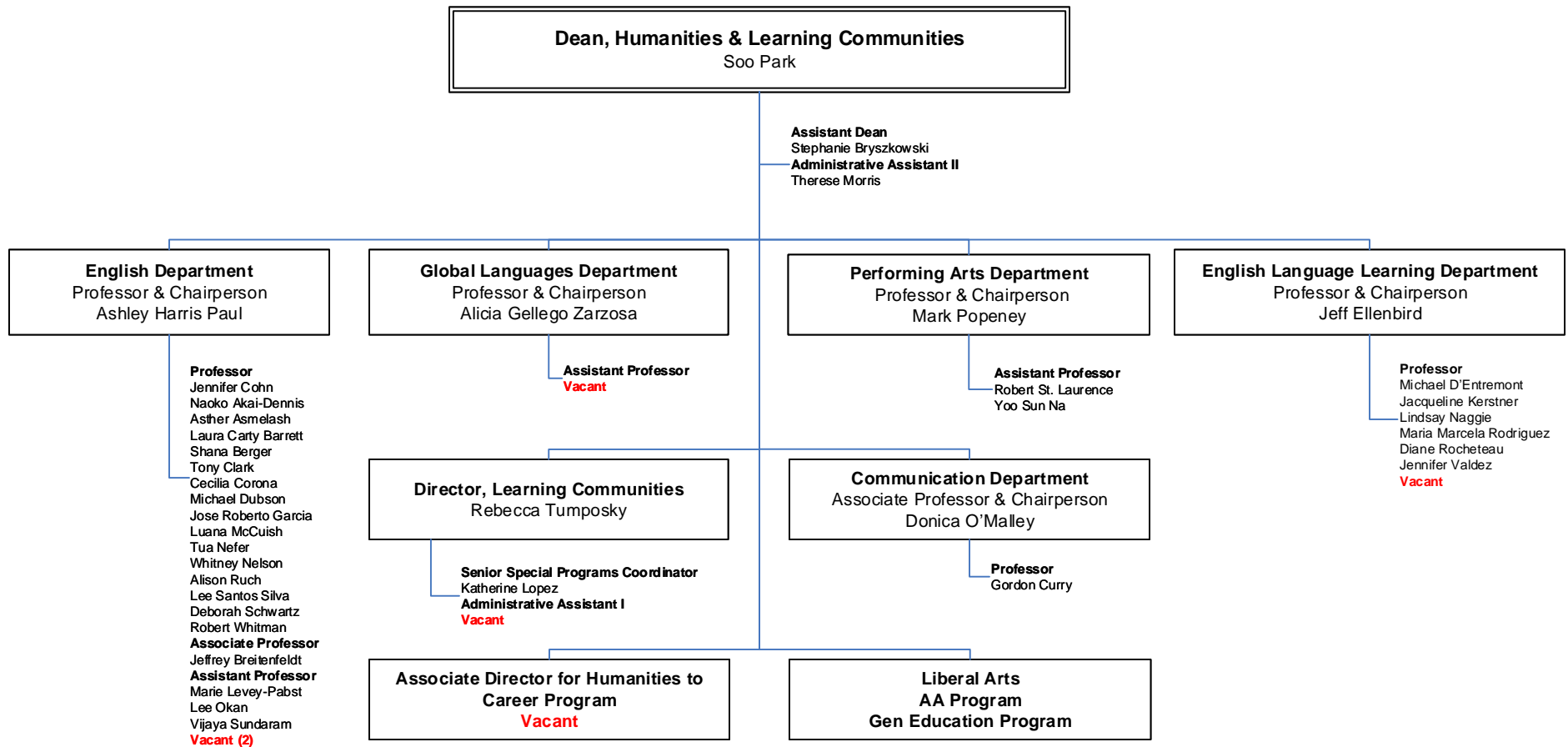
### Behavioral, Social Sciences & Global Learning Organizational Chart #2B



# BUNKER HILL COMMUNITY COLLEGE

## DIVISION OF ACADEMIC & STUDENT AFFAIRS

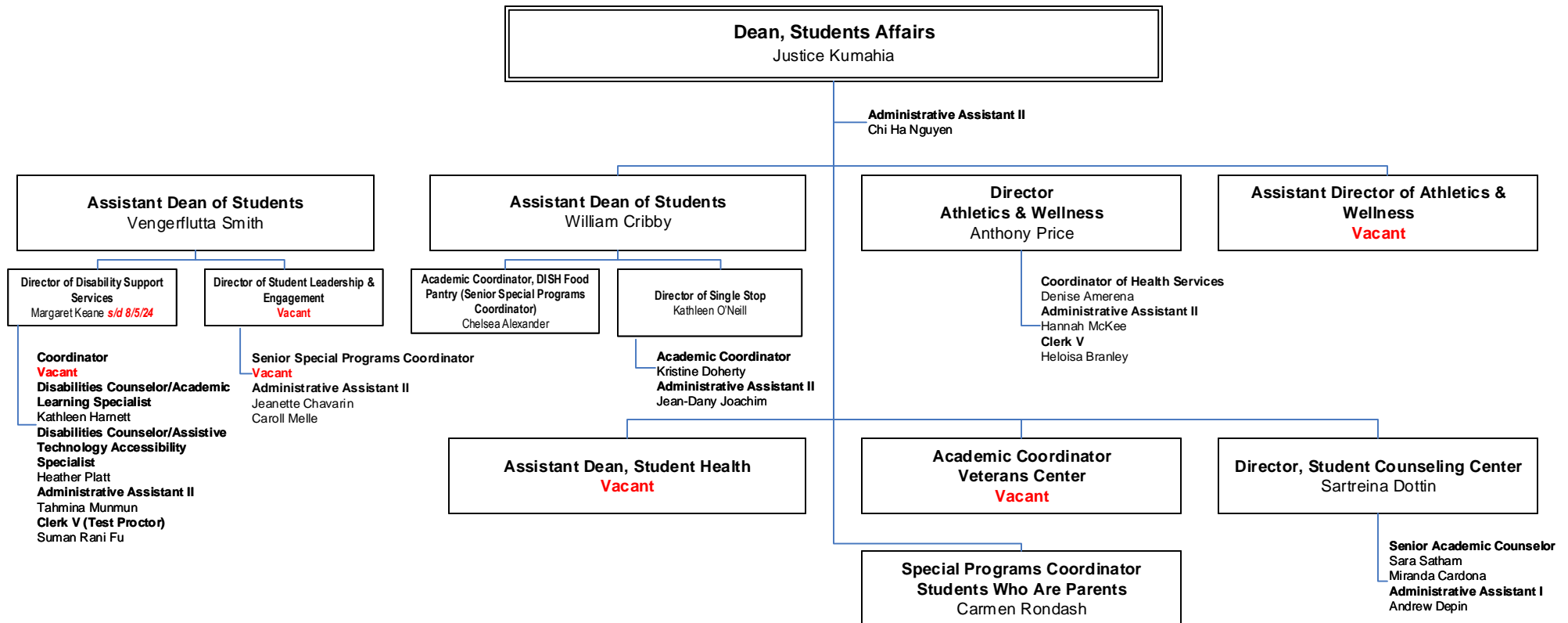
### Humanities & Learning Communities Organizational Chart #2C



# BUNKER HILL COMMUNITY COLLEGE

## DIVISION OF ACADEMIC & STUDENT AFFAIRS

### Student Affairs Organizational Chart #2D

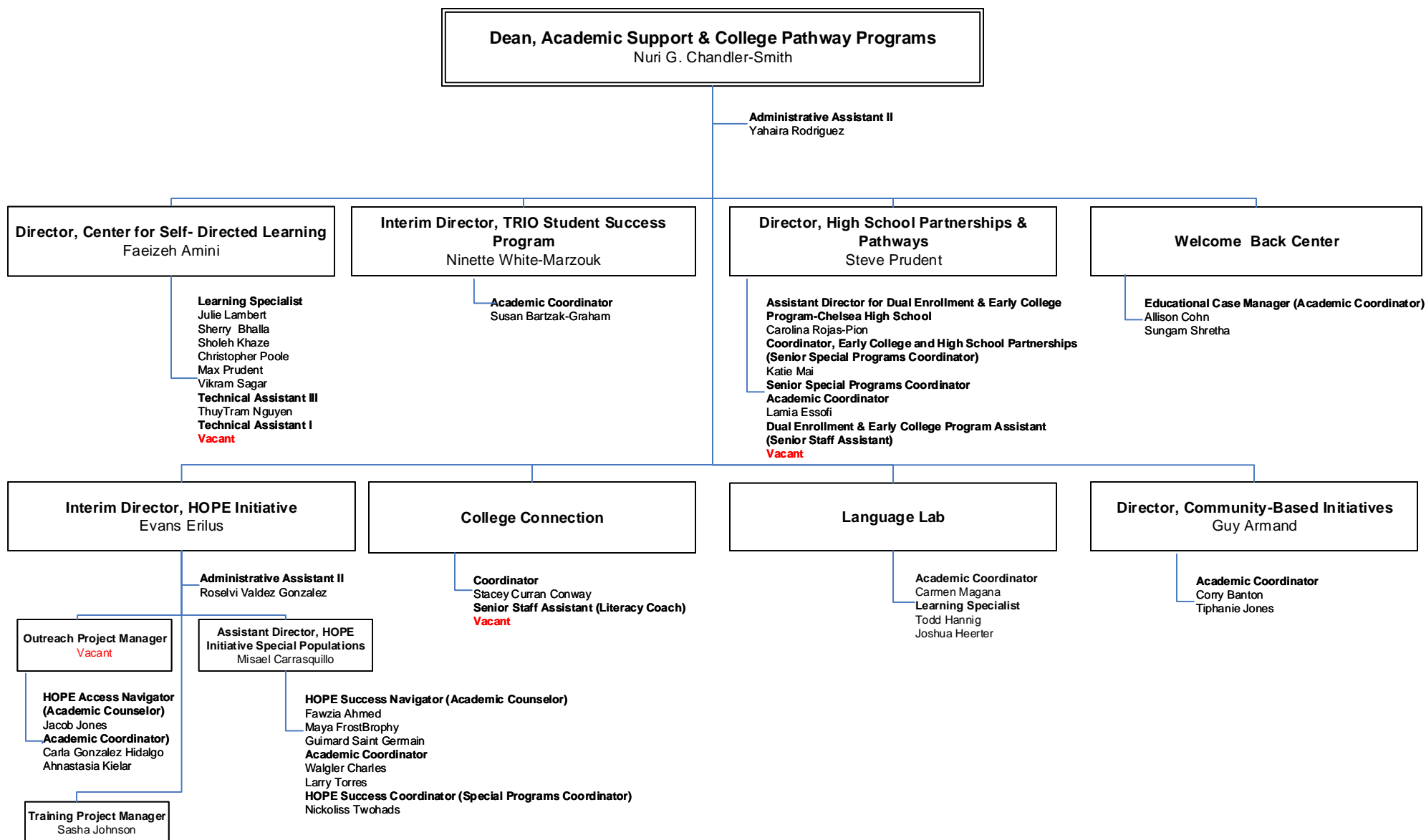


# BUNKER HILL COMMUNITY COLLEGE

## DIVISION OF ACADEMIC & STUDENT AFFAIRS

### Academic Support & College Pathway Programs

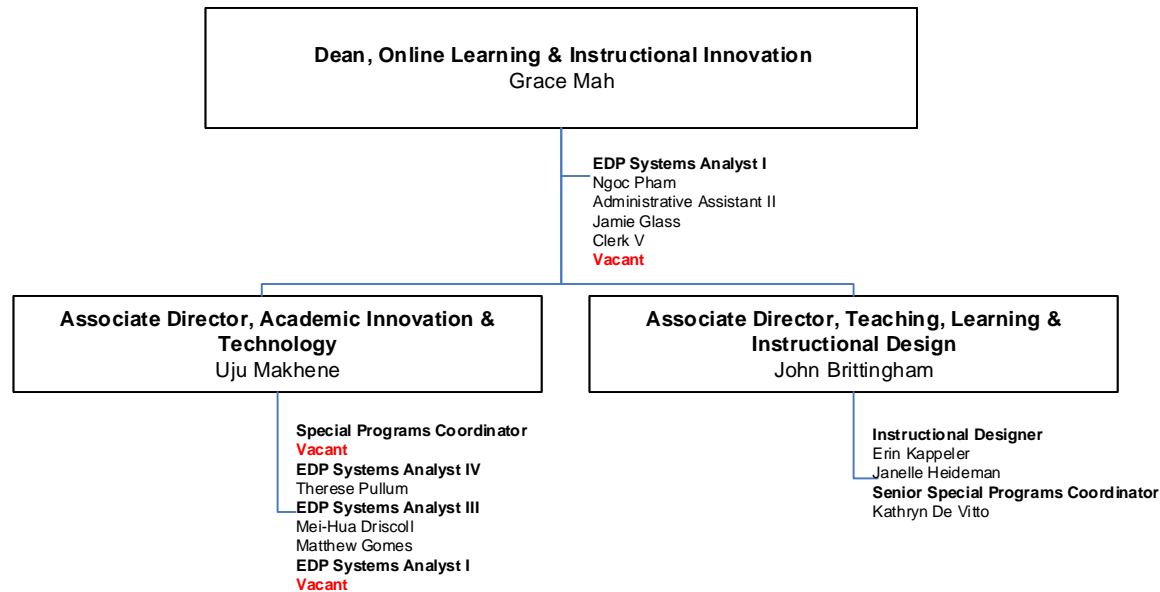
Organizational Chart # 2E



# BUNKER HILL COMMUNITY COLLEGE

## DIVISION OF ACADEMIC & STUDENT AFFAIRS

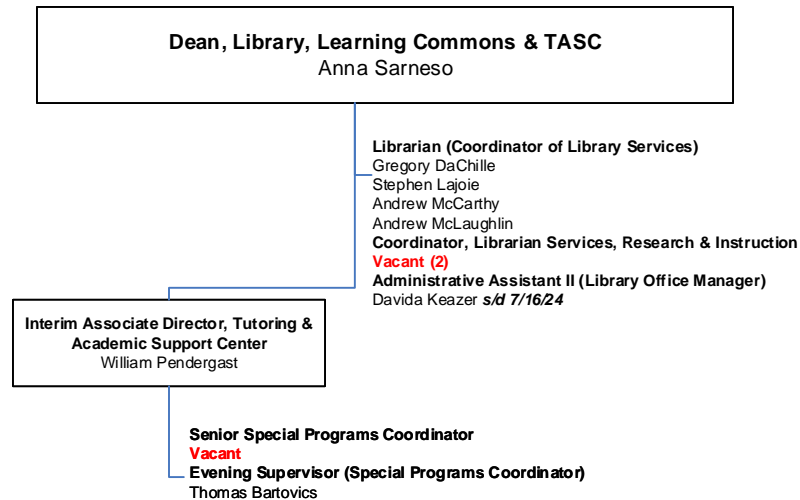
### Online Learning & Instructional Innovation Organizational Chart 2F



# BUNKER HILL COMMUNITY COLLEGE

## DIVISION OF ACADEMIC & STUDENT AFFAIRS

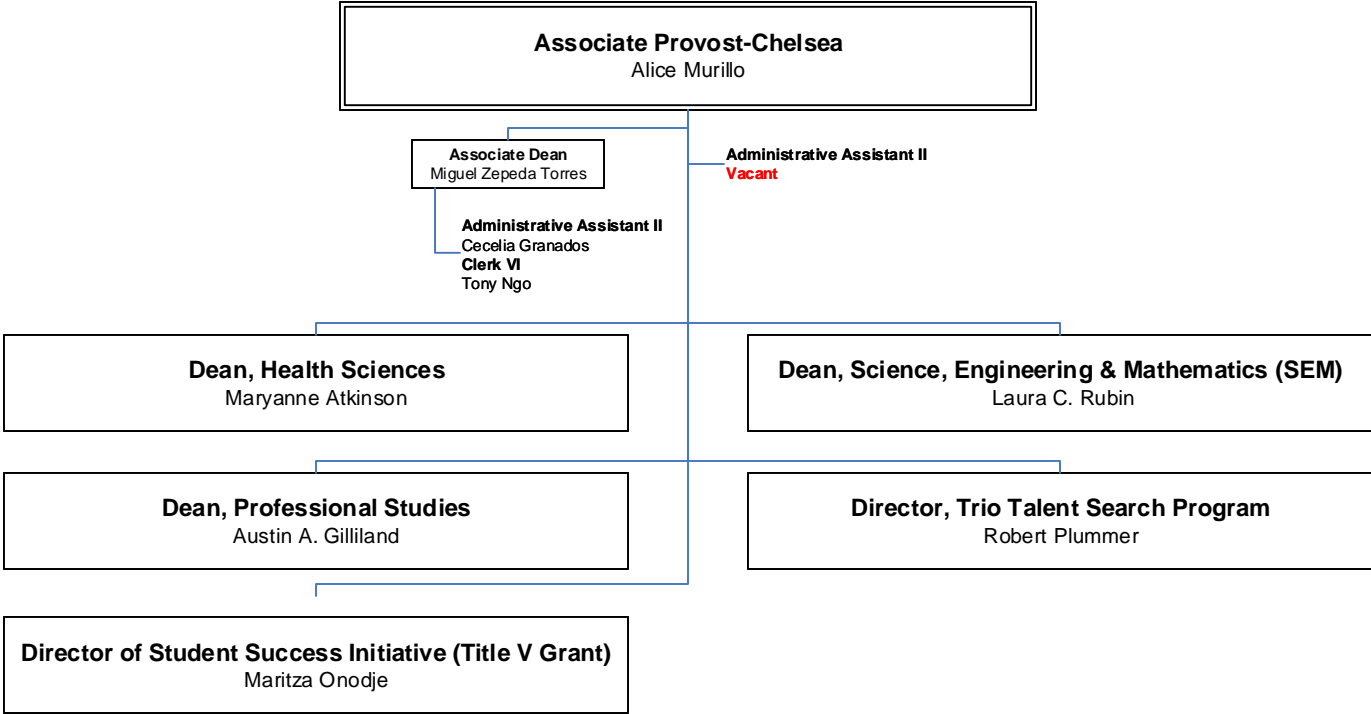
### Library & Learning Commons Organizational Chart #2G



# BUNKER HILL COMMUNITY COLLEGE

## DIVISION OF ACADEMIC & STUDENT AFFAIRS

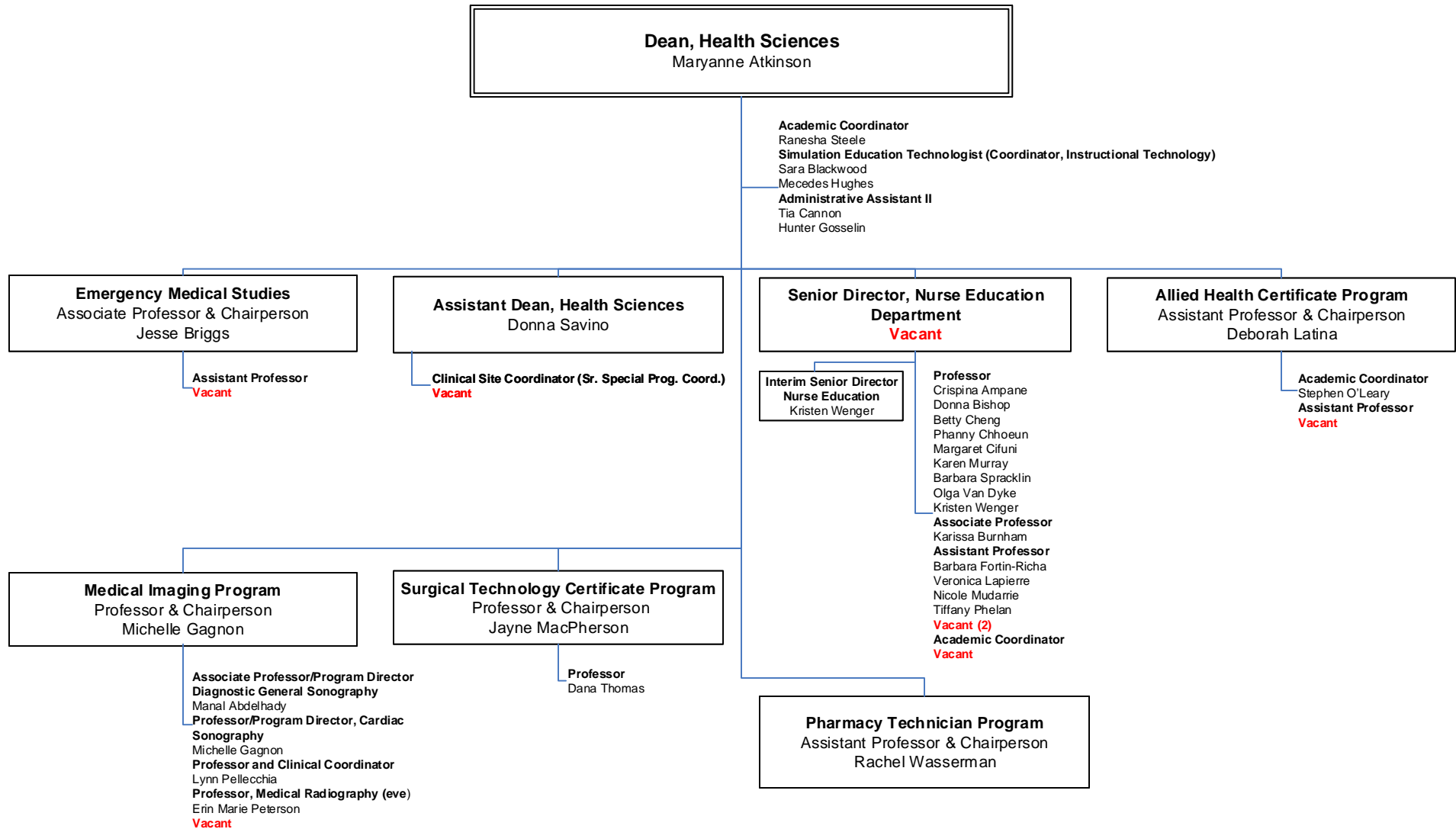
### Associate Provost-Chelsea Organizational Chart 2H



# BUNKER HILL COMMUNITY COLLEGE

## DIVISION OF ACADEMIC & STUDENT AFFAIRS

### Health Sciences Organizational Chart 2I

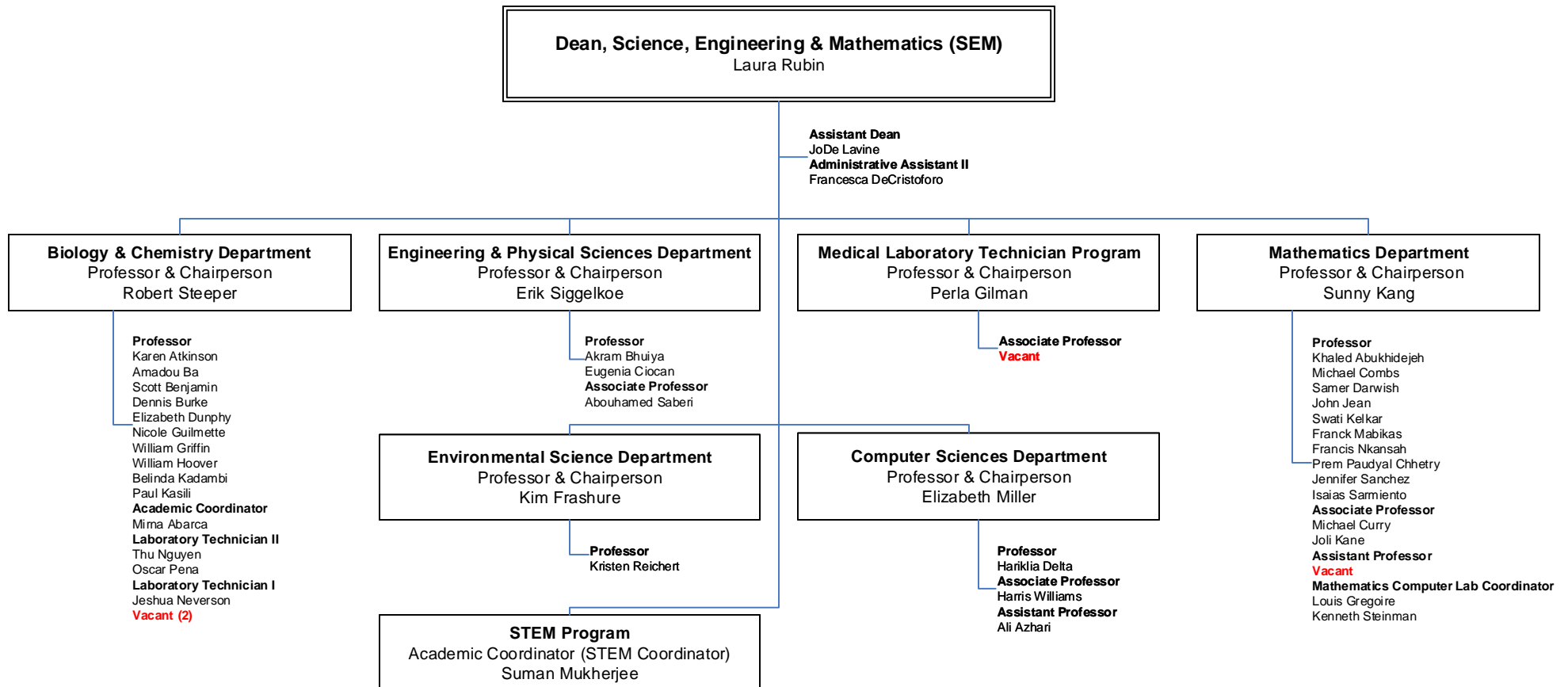




# BUNKER HILL COMMUNITY COLLEGE

## DIVISION OF ACADEMIC & STUDENT AFFAIRS

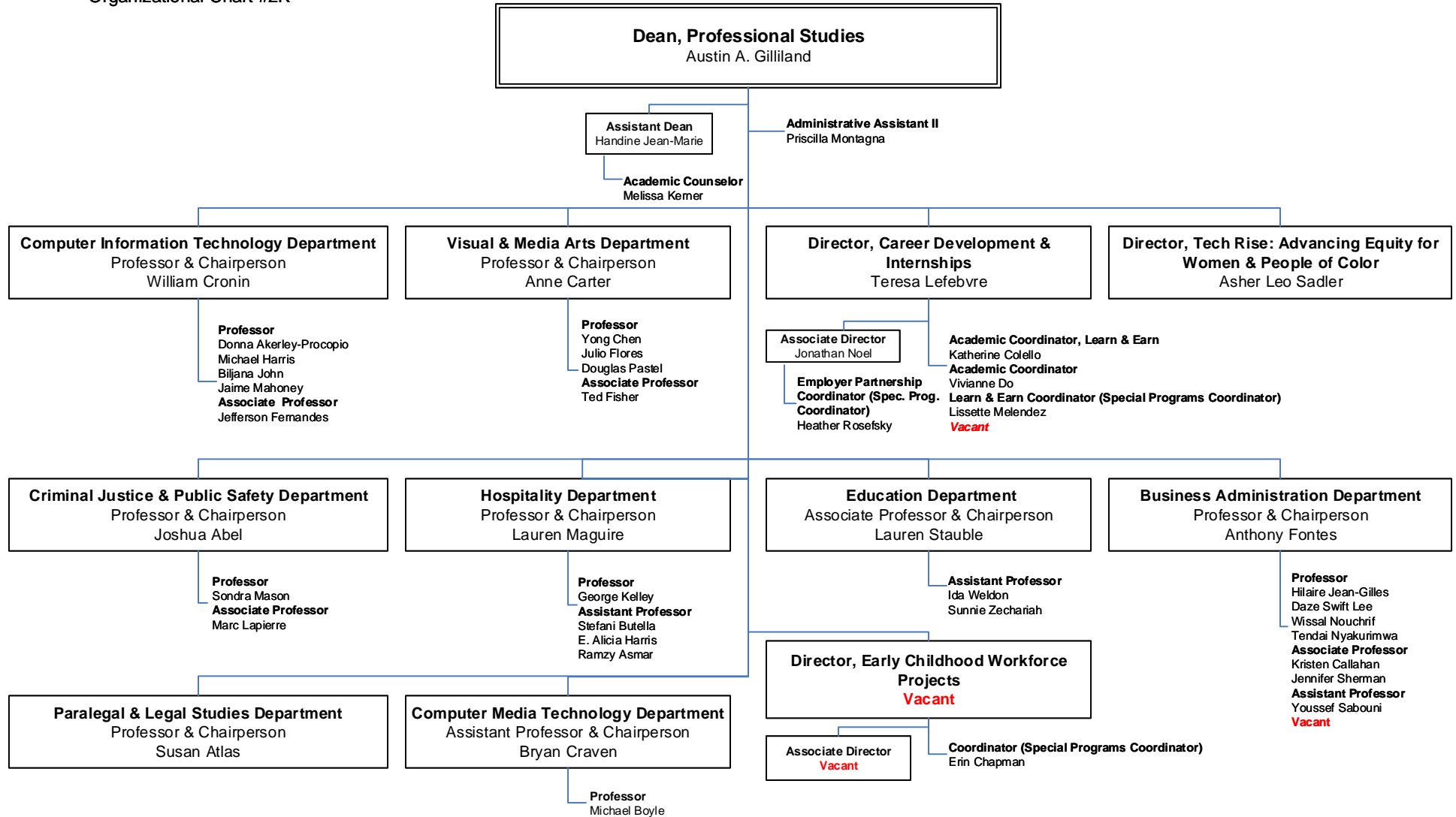
Science, Engineering  
& Mathematics (SEM)  
Organizational Chart #2J



# BUNKER HILL COMMUNITY COLLEGE

## DIVISION OF ACADEMIC & STUDENT AFFAIRS

### Professional Studies Organizational Chart #2K

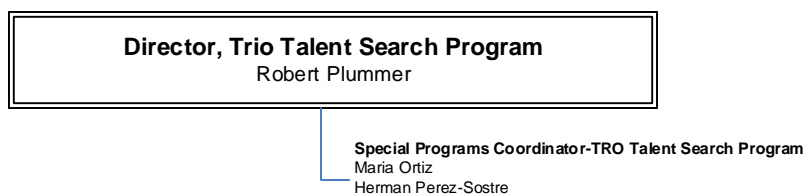


# BUNKER HILL COMMUNITY COLLEGE

DIVISION OF ACADEMIC & STUDENT AFFAIRS

## Trio Talent Search Program

Organizational Chart #2L

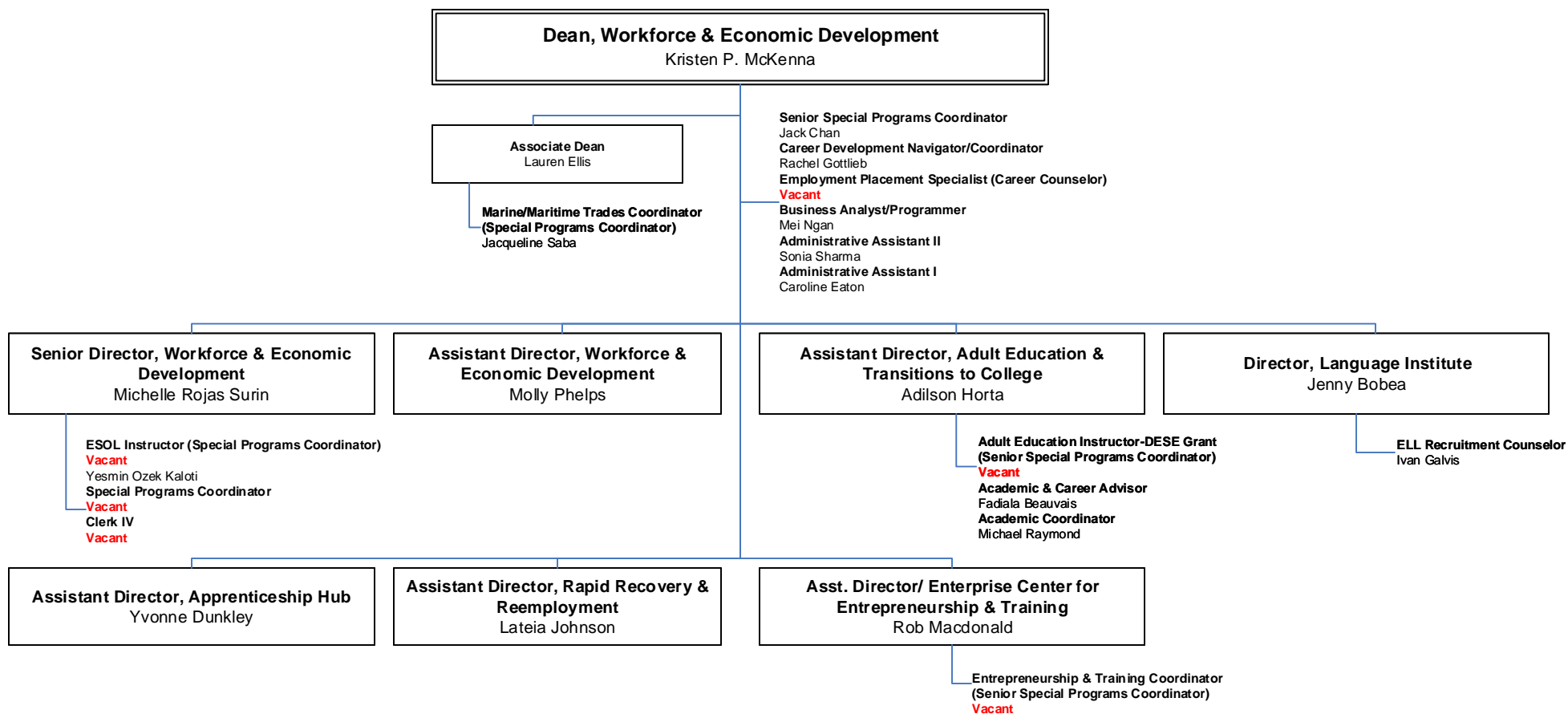


# BUNKER HILL COMMUNITY COLLEGE

## DIVISION OF ACADEMIC & STUDENT AFFAIRS

### Workforce & Economic Development

Organizational Chart #2M

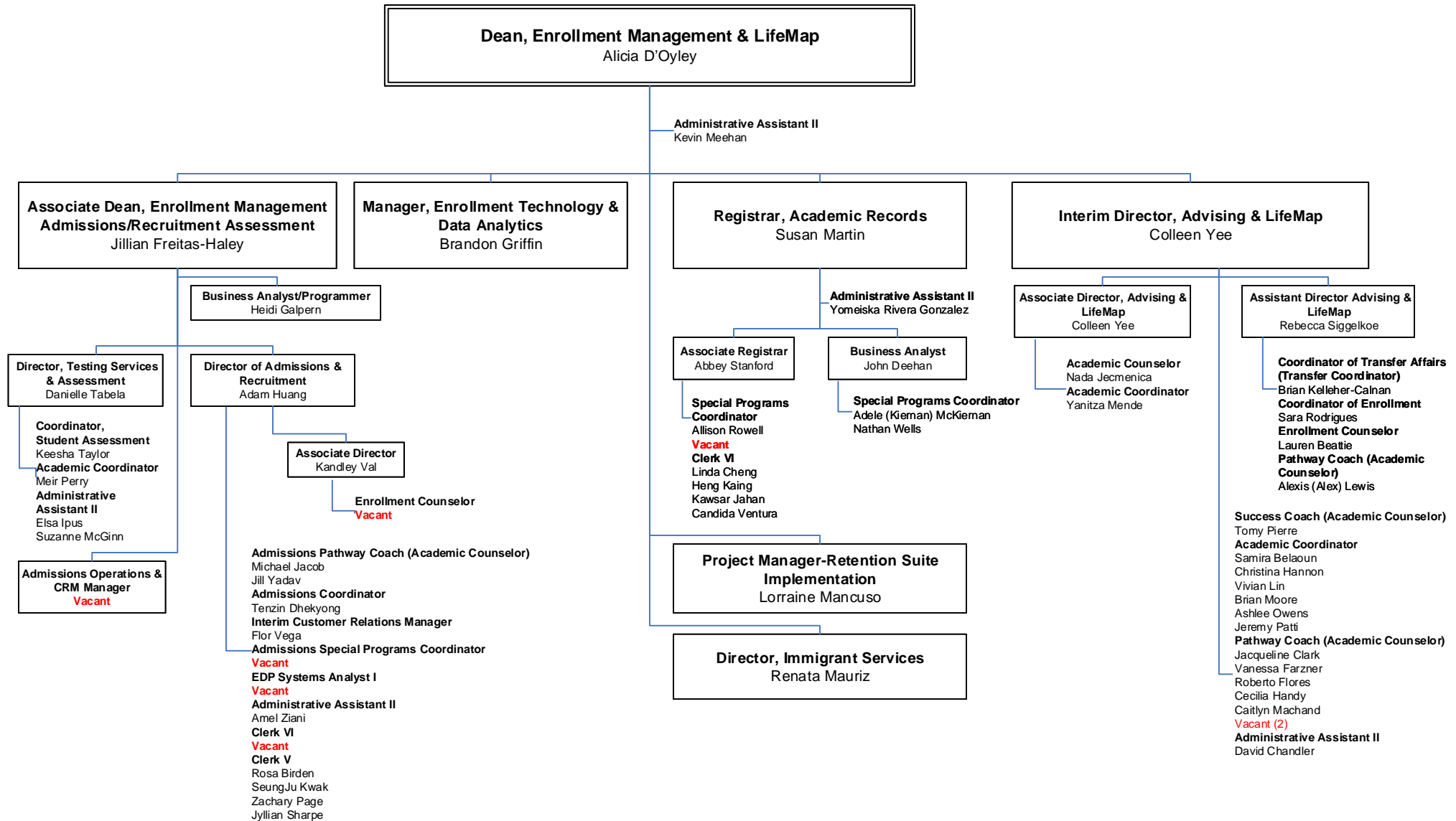


# BUNKER HILL COMMUNITY COLLEGE

## DIVISION OF ACADEMIC & STUDENT AFFAIRS

### Enrollment Management & LifeMap

#### Organizational Chart 2N

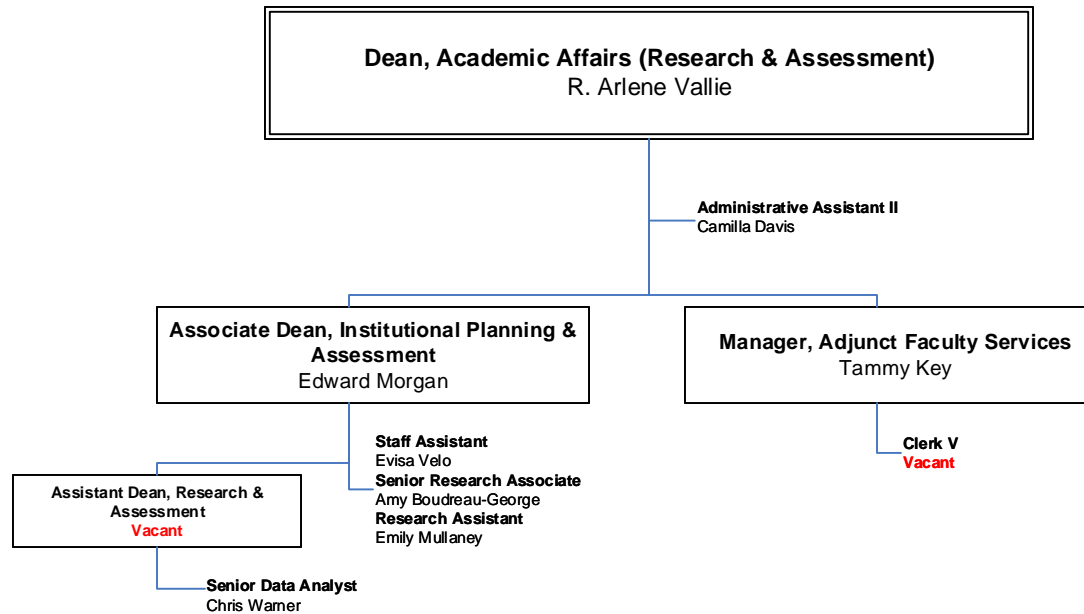


# BUNKER HILL COMMUNITY COLLEGE

## DIVISION OF ACADEMIC & STUDENT AFFAIRS

### Academic Affairs (Research & Assessment)

Organizational Chart #20



**BUNKER HILL COMMUNITY COLLEGE**  
**DIVISION OF ACADEMIC & STUDENT AFFAIRS**

**College Events & Cultural Planning**  
Organizational Chart #2P

