



# ORGANIZATIONAL CHARTS

BUNKER HILL COMMUNITY COLLEGE  
250 NEW RUTHERFORD AVENUE  
BOSTON, MA 02129-2925  
**APRIL 22, 2024**

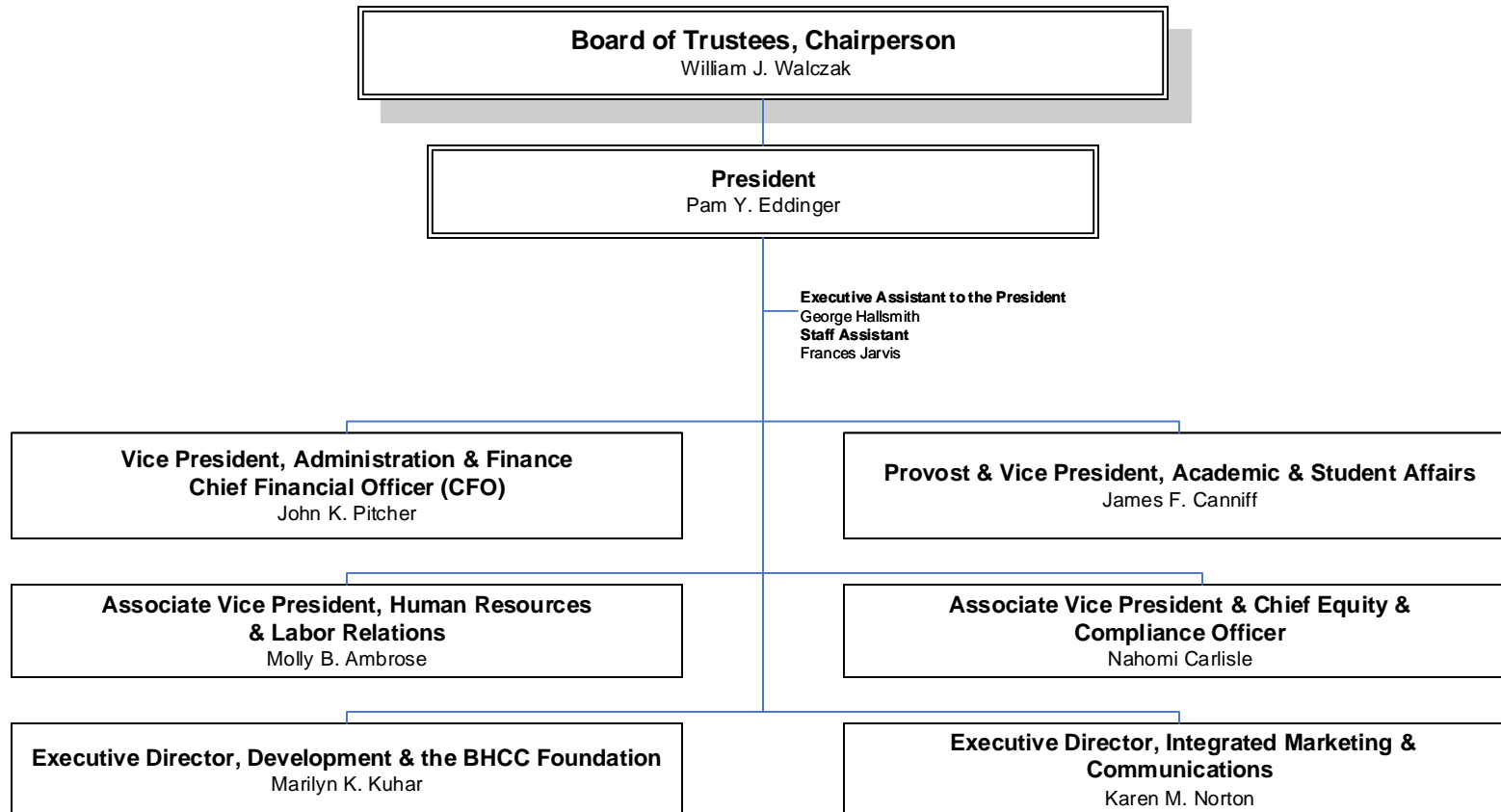
# TABLE OF CONTENTS

<b>TABLE OF CONTENTS</b>			
<b>EXECUTIVE DIVISION</b>		<b>CHART 1</b>	<b>DIVISION OF ACADEMIC &amp; STUDENT AFFAIRS (con't)</b>
HUMAN RESOURCES	CHART 1A	ACADEMIC AFFAIRS (RESEARCH & ASSESSMENT)	CHART 20
INTEGRATED MARKETING & COMMUNICATIONS	CHART 1B	COLLEGE EVENTS & CULTURAL PLANNING	CHART 2P
DEVELOPMENT & BHCC FOUNDATION	CHART 1C		
EQUITY AND COMPLIANCE OFFICER	CHART 1D		
<b>DIVISION OF ADMINISTRATION &amp; FINANCE</b>		<b>CHART 1E</b>	
ADMINISTRATION & FINANCE	CHART 1F		
FACILITIES MANAGEMENT	CHART 1G		
STUDENT FINANCIAL SERVICES	CHART 1H		
GRANTS DEPARTMENT	CHART 1I		
PUBLIC SAFETY	CHART 1J		
INFORMATION SERVICES	CHART 1K		
<b>DIVISION OF ACADEMIC &amp; STUDENT AFFAIRS</b>		<b>CHART 2</b>	
<b>ASSOCIATE PROVOST-CHARLESTOWN</b>		CHART 2A	
BEHAVIORAL, SOCIAL SCIENCES & GLOBAL LEARNING	CHART 2B		
HUMANITIES & LEARNING COMMUNITIES	CHART 2C		
STUDENT AFFAIRS	CHART 2D		
ACADEMIC SUPPORT & COLLEGE PATHWAY PROGRAMS	CHART 2E		
ONLINE LEARNING & INSTRUCTIONAL INNOVATION	CHART 2F		
LIBRARY & LEARNING COMMONS	CHART 2G		
<b>ASSOCIATE PROVOST-CHELSEA</b>		CHART 2H	
HEALTH SCIENCES	CHART 2I		
SCIENCE, ENGINEERING & MATHEMATICS	CHART 2J		
PROFESSIONAL STUDIES	CHART 2K		
CHELSEA CAMPUS-TRIO TALENT SEARCH PROGRAM	CHART 2L		
WORKFORCE & ECONOMIC DEVELOPMENT	CHART 2M		
ENROLLMENT MANAGEMENT & LIFEMAP	CHART 2N		

# BUNKER HILL COMMUNITY COLLEGE

## EXECUTIVE DIVISION

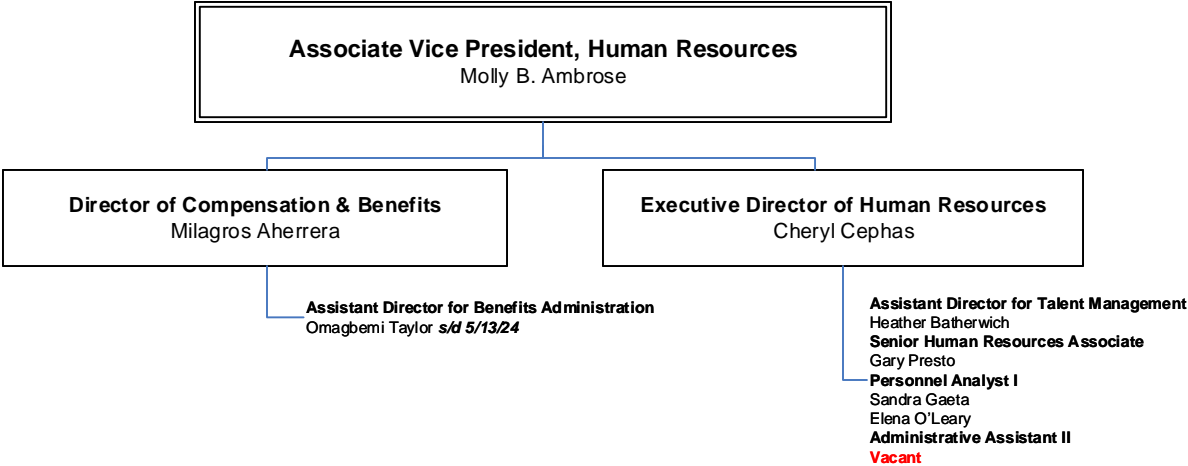
**Executive**  
Organizational Chart #1



# BUNKER HILL COMMUNITY COLLEGE

## EXECUTIVE DIVISION

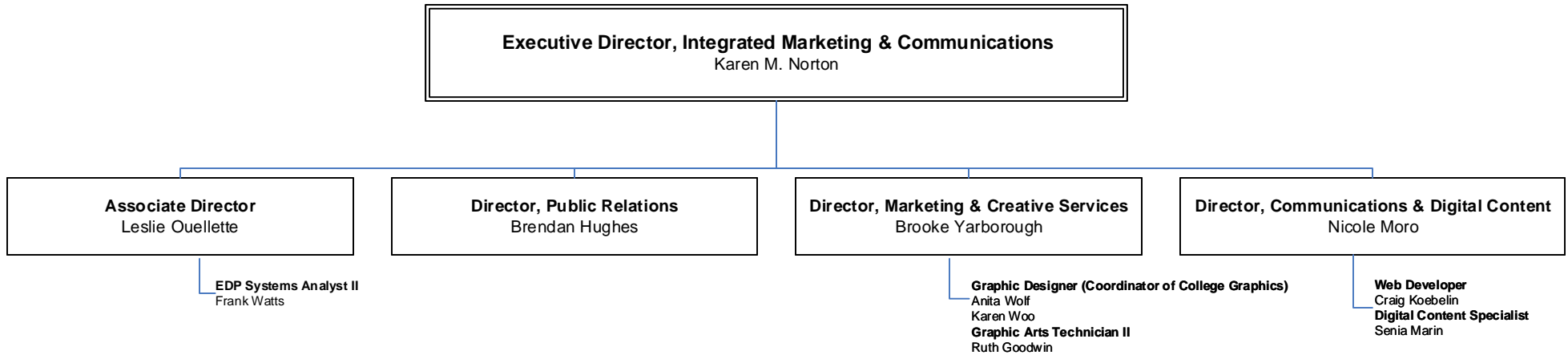
### Human Resources Organizational Chart #1A



# BUNKER HILL COMMUNITY COLLEGE

## EXECUTIVE DIVISION

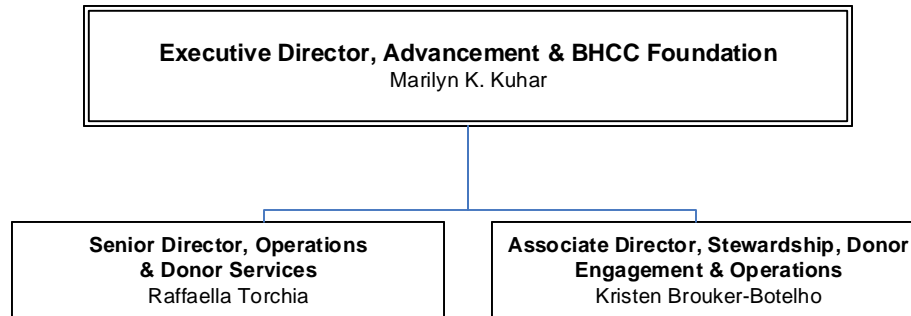
### Integrated Marketing & Communications Organizational Chart #1B



# BUNKER HILL COMMUNITY COLLEGE

## EXECUTIVE DIVISION

**Advancement & BHCC Foundation**  
Organizational Chart #1C



# BUNKER HILL COMMUNITY COLLEGE

## EXECUTIVE DIVISION

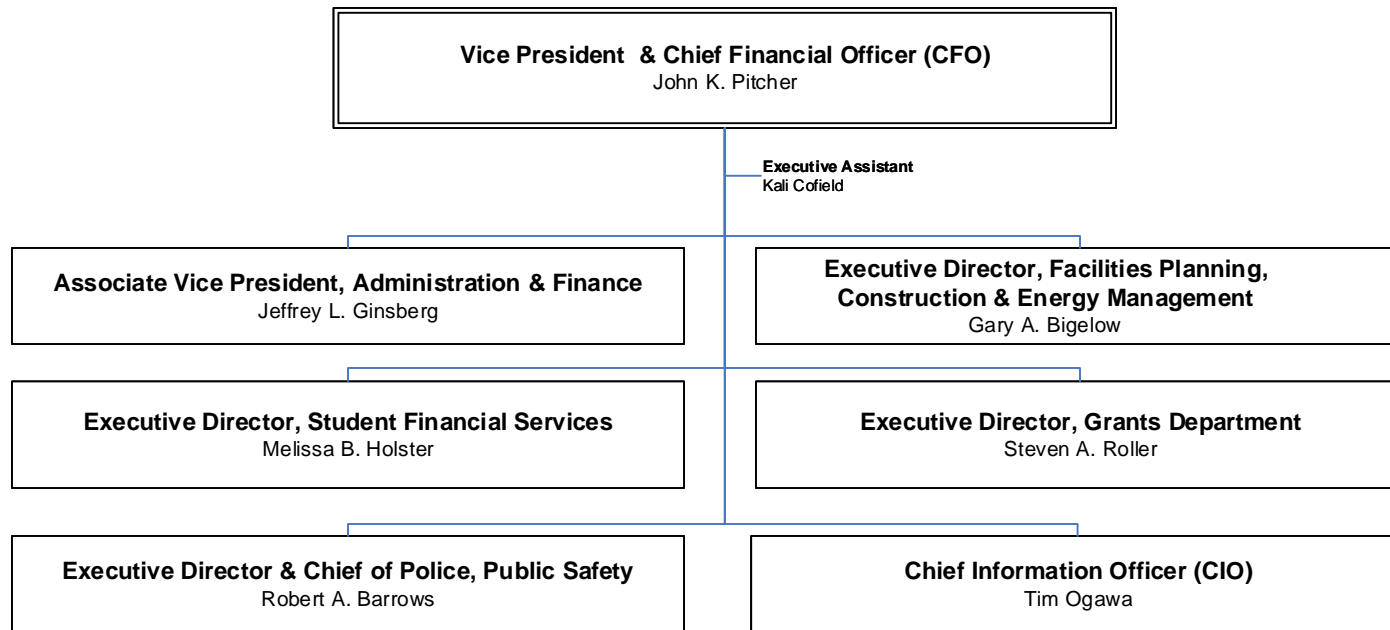
**Equity & Compliance**  
Organizational Chart #1D

**Associate Vice President & Chief Equity & Compliance Officer**  
Nahomi Carlisle

# BUNKER HILL COMMUNITY COLLEGE

## DIVISION OF ADMINISTRATION & FINANCE

Administration & Finance  
Organizational Chart #1E

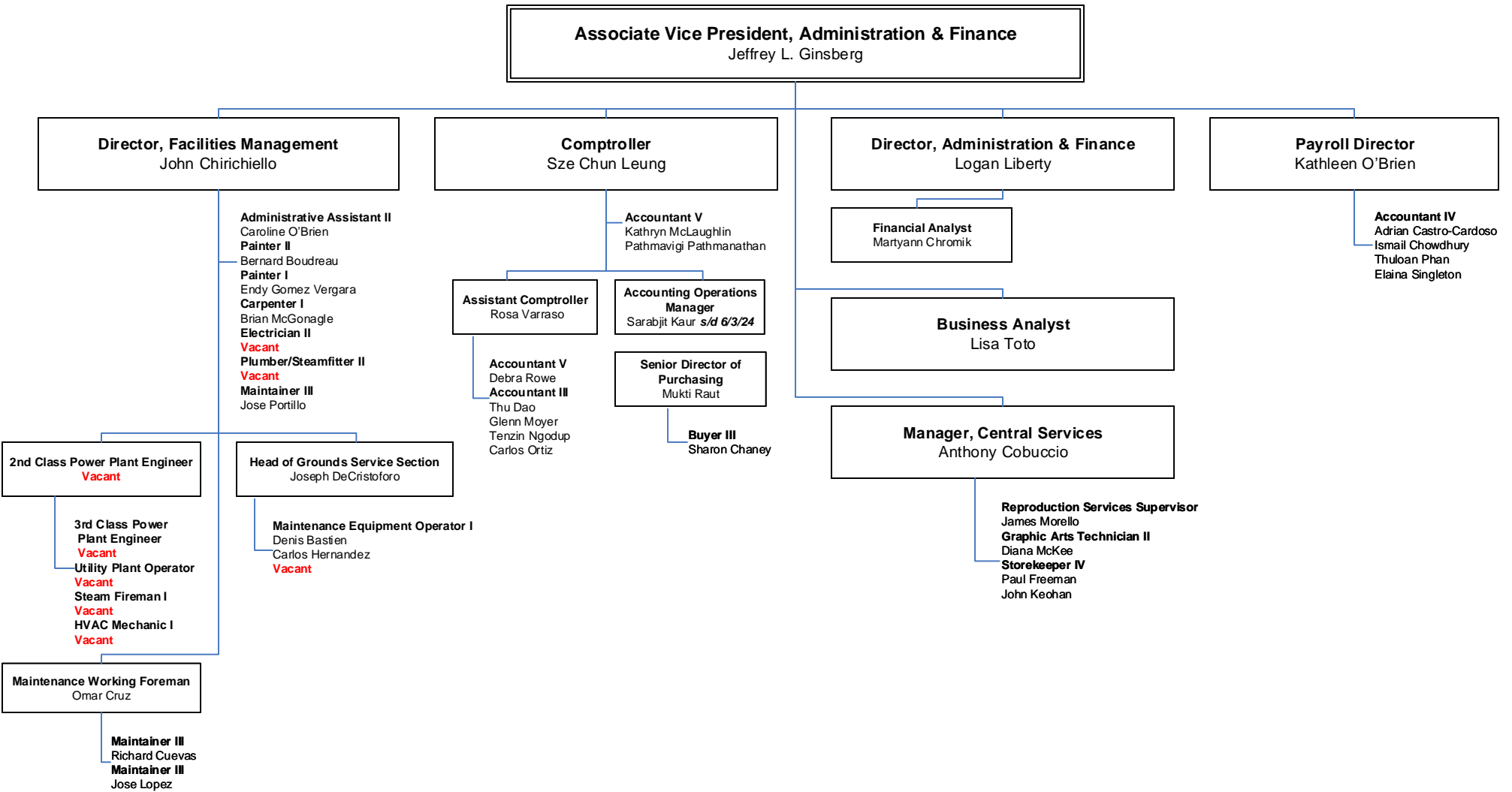




# BUNKER HILL COMMUNITY COLLEGE

## DIVISION OF ADMINISTRATION & FINANCE

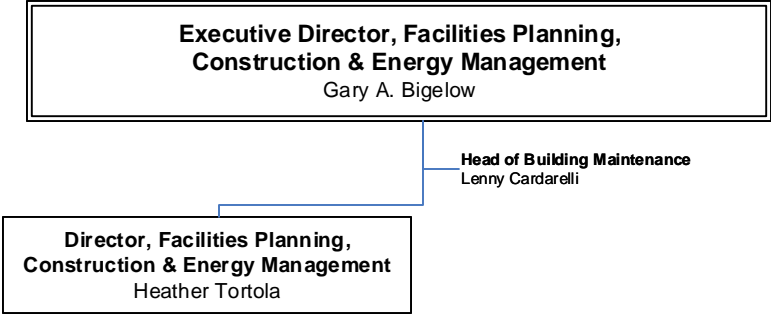
### Administration & Finance Organizational Chart #1F



# BUNKER HILL COMMUNITY COLLEGE

## DIVISION OF ADMINISTRATION & FINANCE

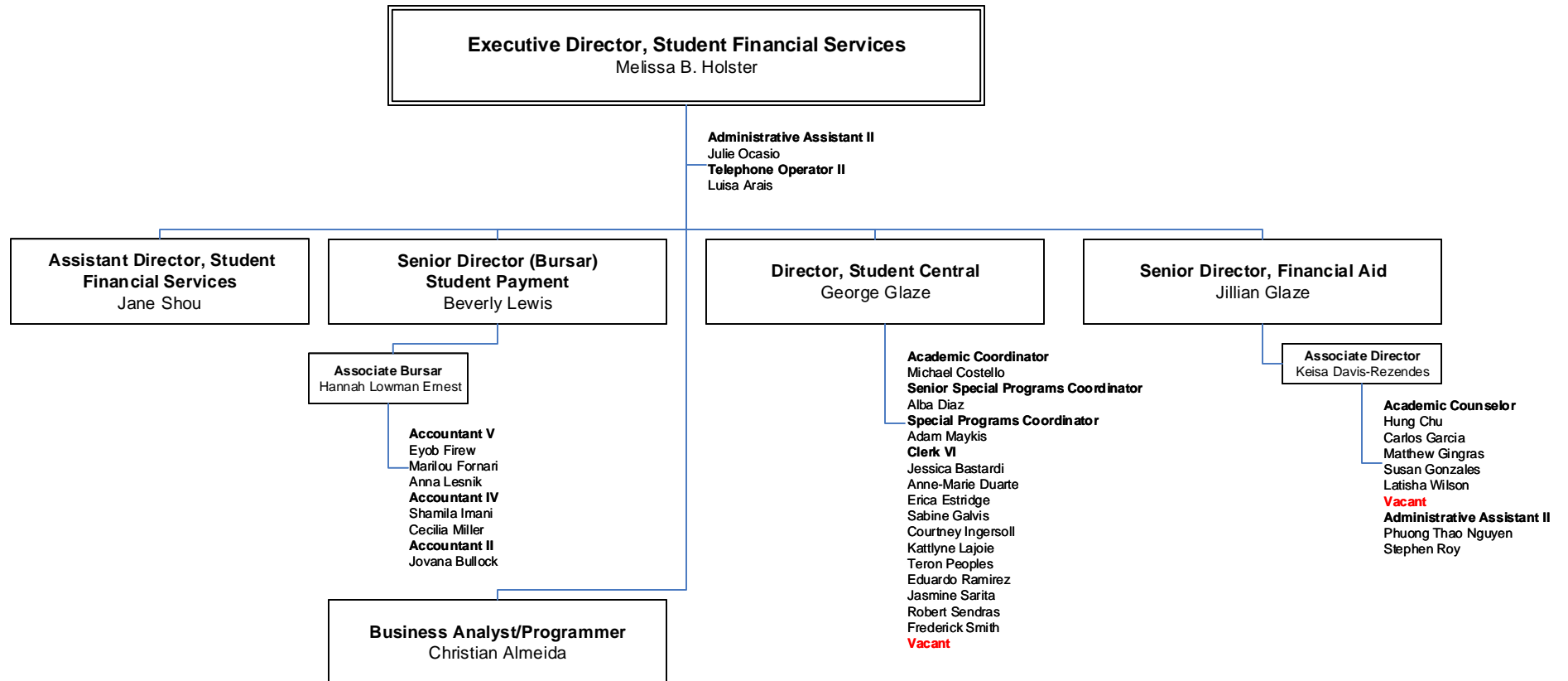
**Facilities Management**  
Organizational Chart #1G



# BUNKER HILL COMMUNITY COLLEGE

## DIVISION OF ADMINISTRATION & FINANCE

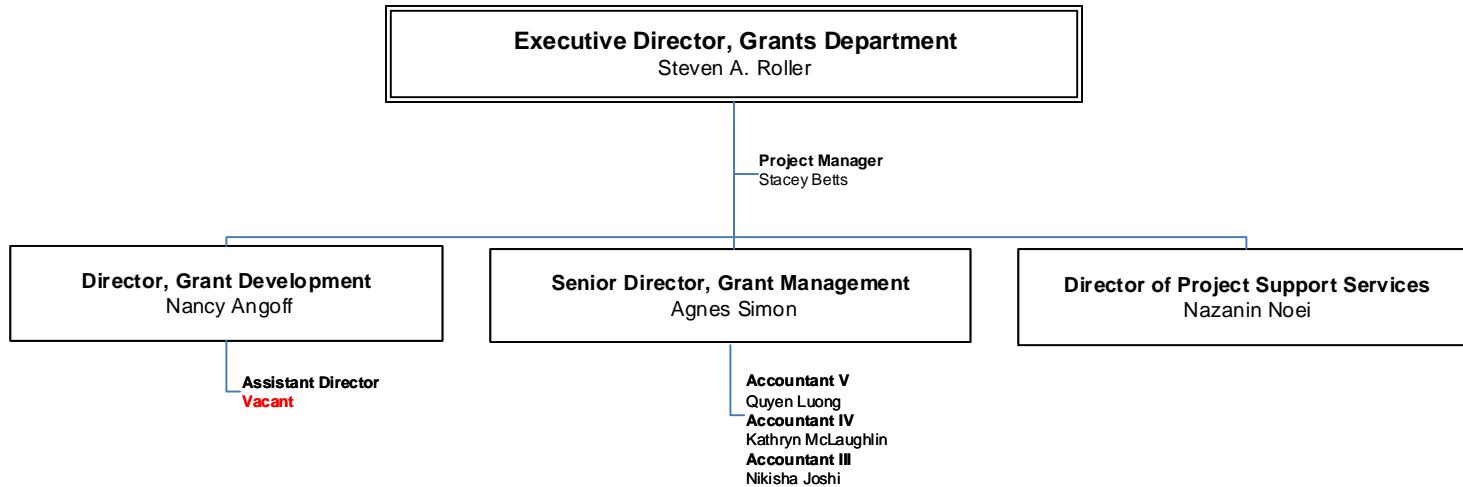
### Student Financial Services Organizational Chart #1H



# BUNKER HILL COMMUNITY COLLEGE

## DIVISION OF ADMINISTRATION & FINANCE

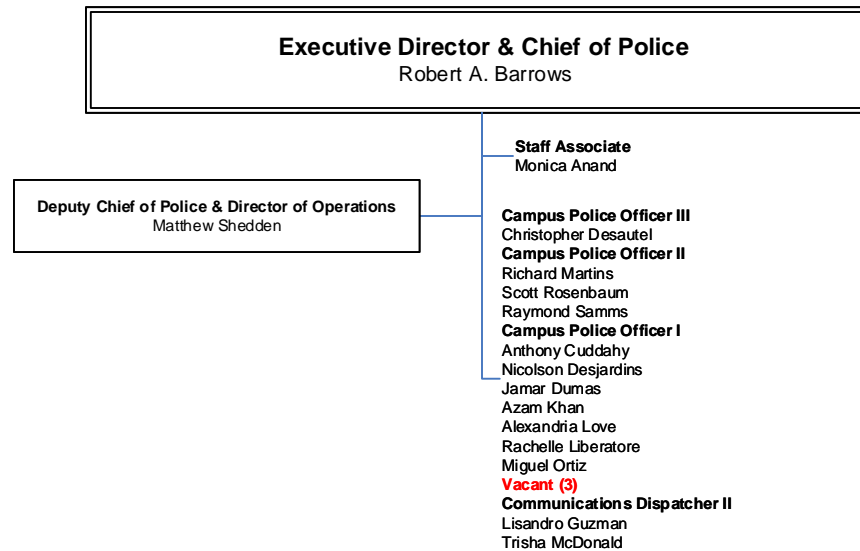
Grants Department  
Organizational Chart #11



# BUNKER HILL COMMUNITY COLLEGE

## DIVISION OF ADMINISTRATION & FINANCE

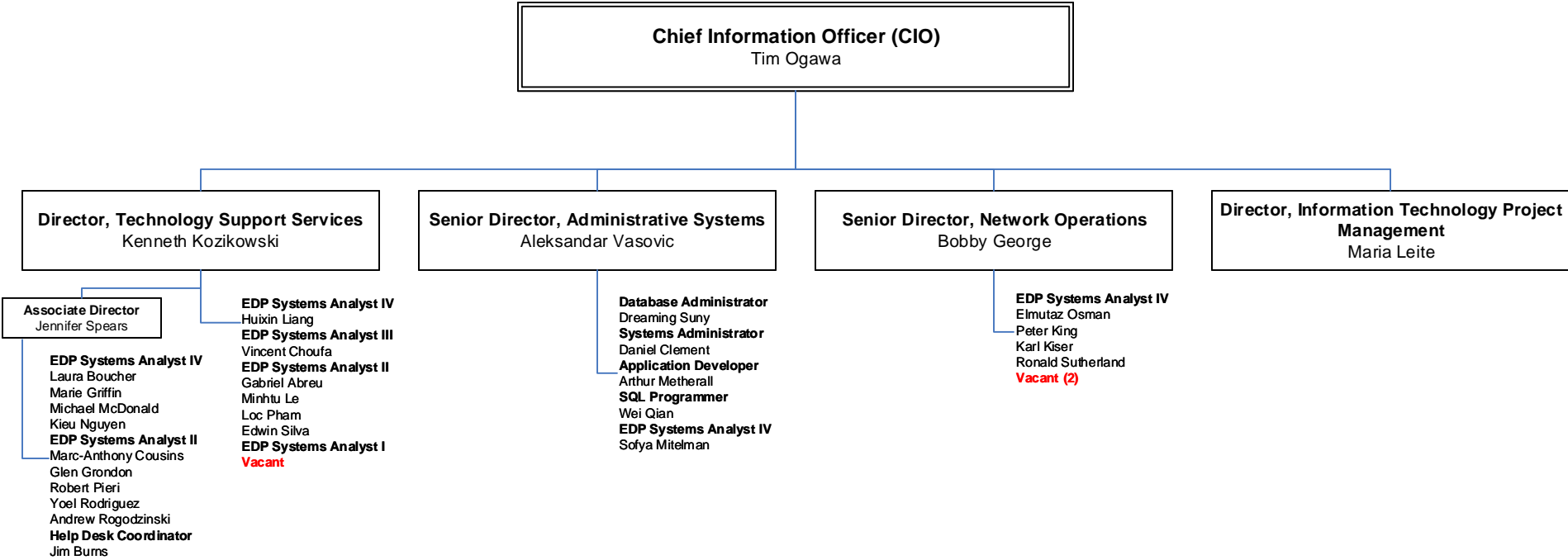
### Public Safety Organizational Chart #1J



# BUNKER HILL COMMUNITY COLLEGE

## DIVISION OF ADMINISTRATION & FINANCE

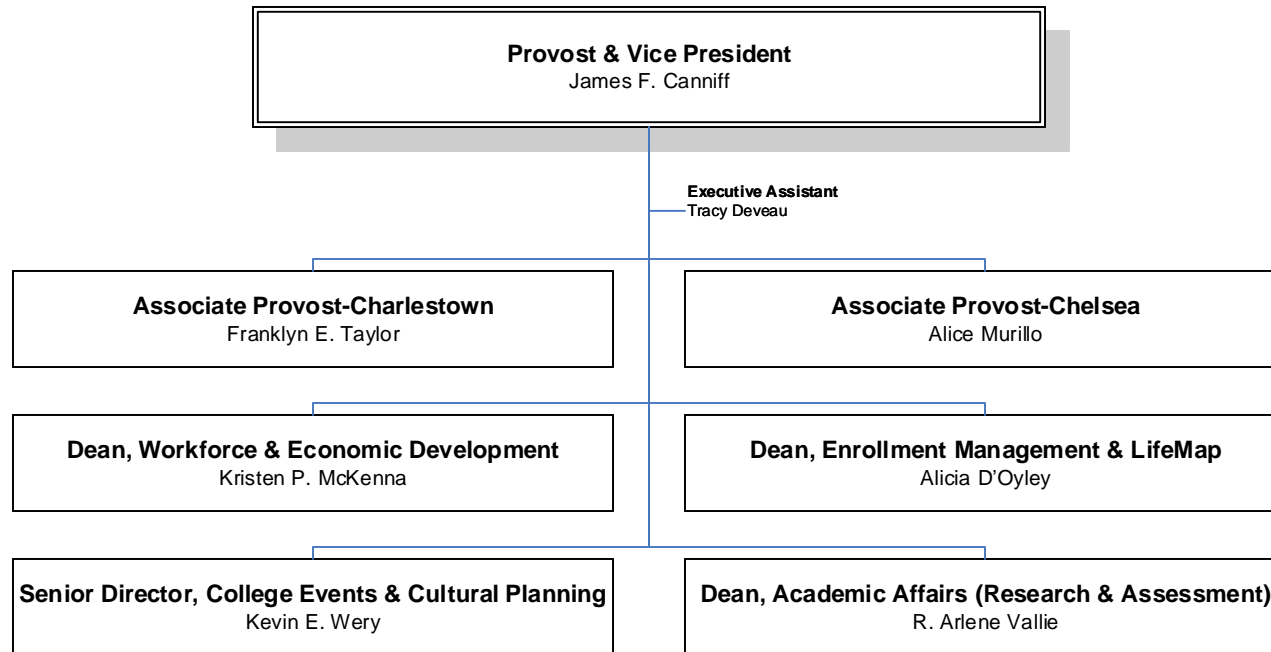
### Information Services Organizational Chart #1K



# BUNKER HILL COMMUNITY COLLEGE

## DIVISION OF ACADEMIC & STUDENT AFFAIRS

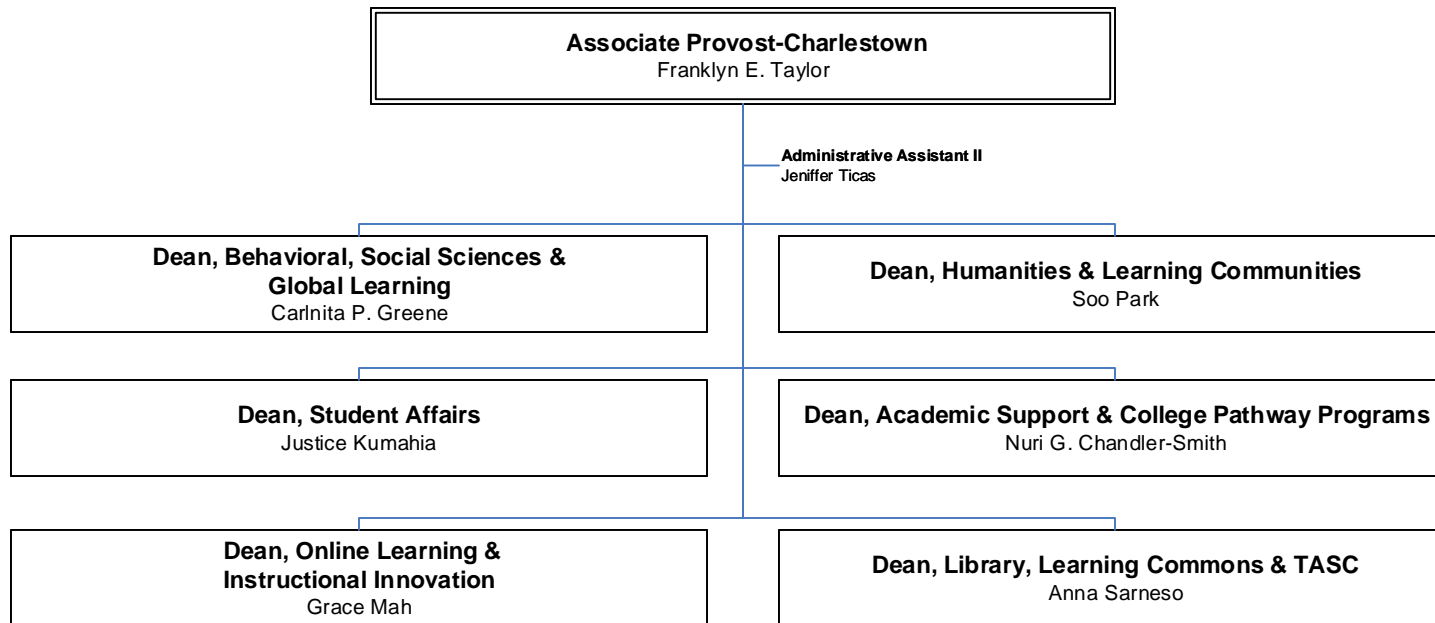
### Academic & Student Affairs Organizational Chart #2



# BUNKER HILL COMMUNITY COLLEGE

## DIVISION OF ACADEMIC & STUDENT AFFAIRS

Associate Provost-Charlestown  
Organizational Chart# 2A

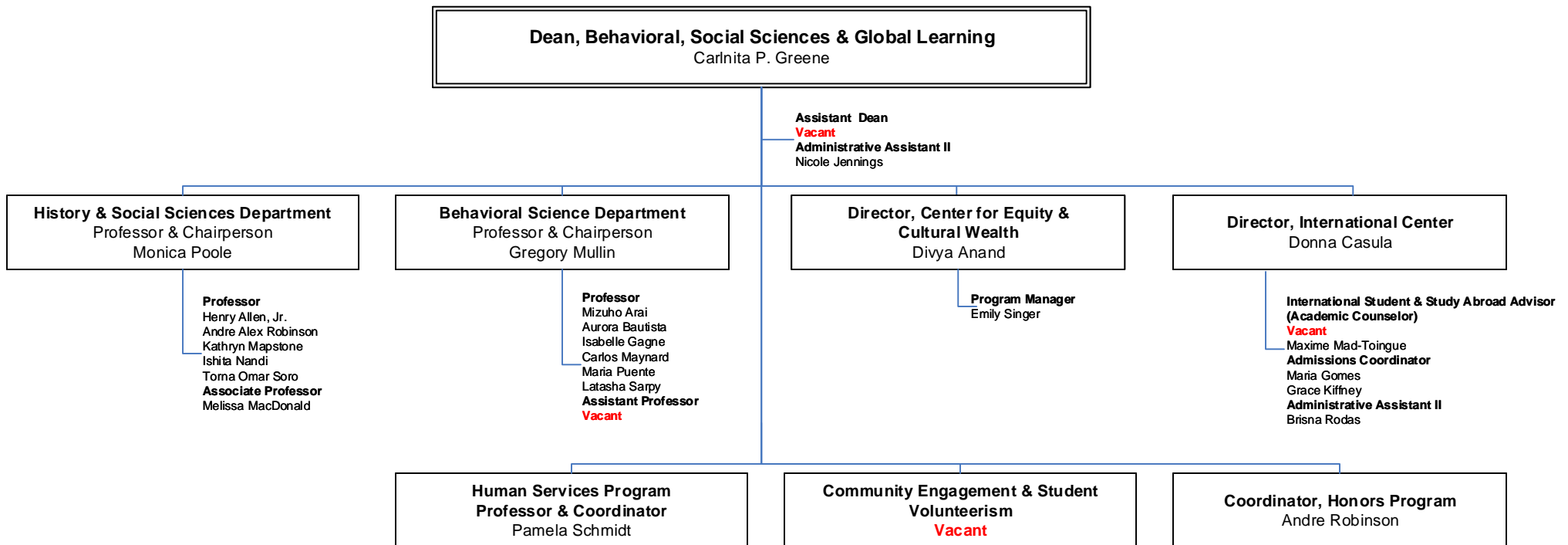




# BUNKER HILL COMMUNITY COLLEGE

## DIVISION OF ACADEMIC & STUDENT AFFAIRS

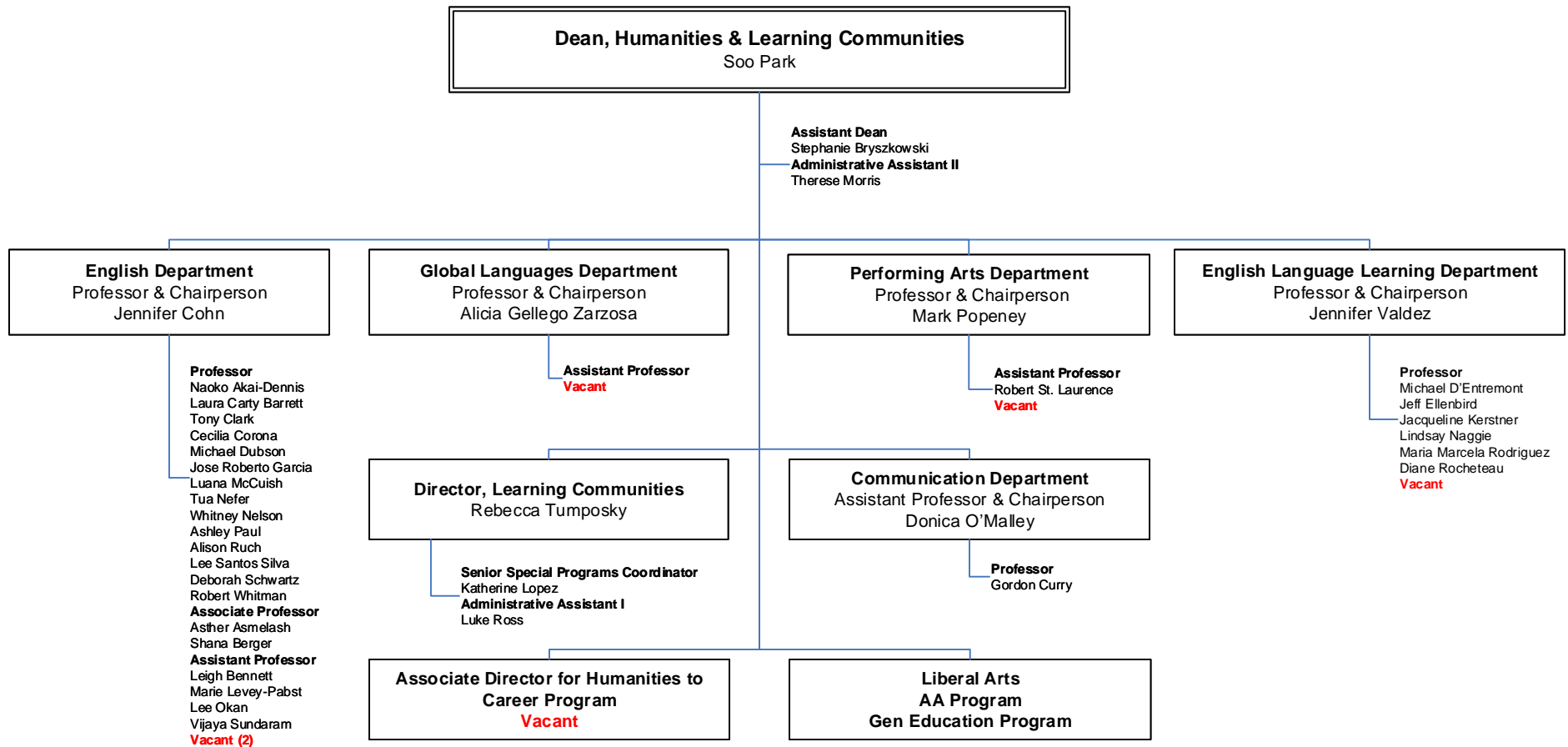
Behavioral, Social Sciences  
& Global Learning  
Organizational Chart #2B



# BUNKER HILL COMMUNITY COLLEGE

## DIVISION OF ACADEMIC & STUDENT AFFAIRS

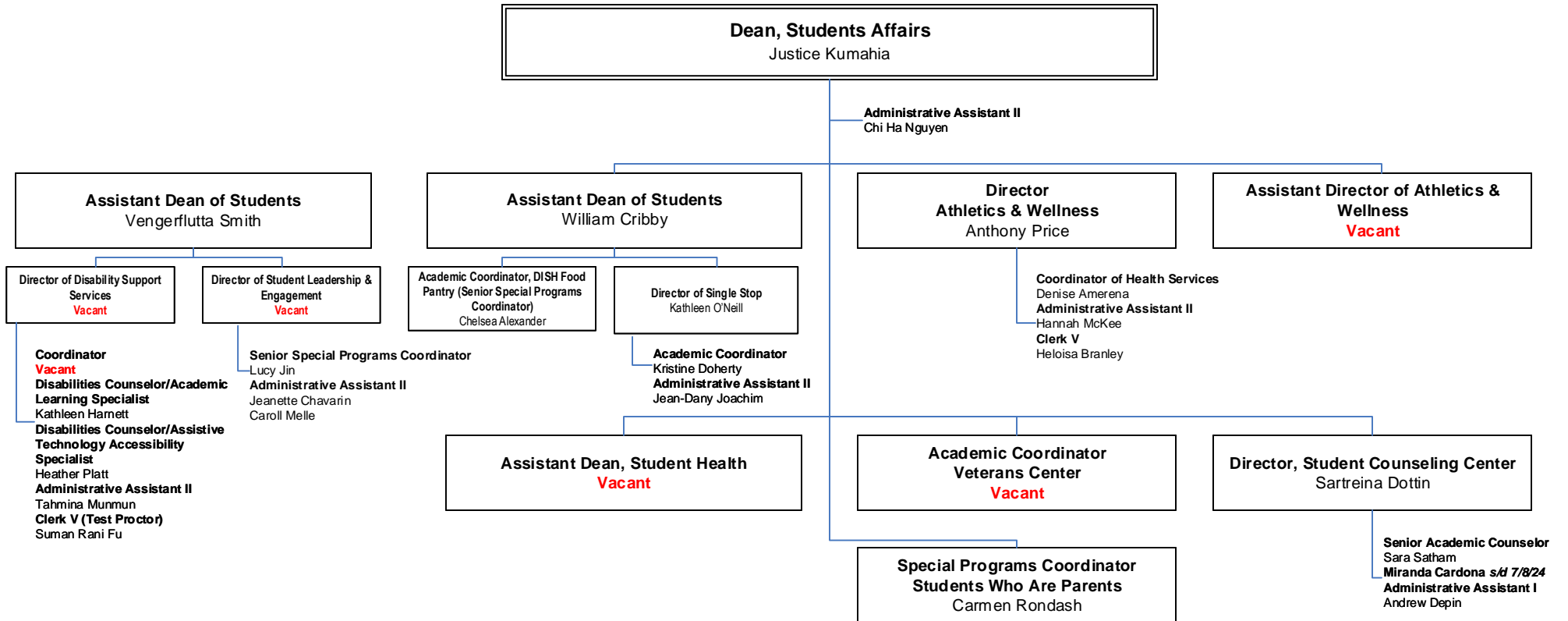
### Humanities & Learning Communities Organizational Chart #2C



# BUNKER HILL COMMUNITY COLLEGE

## DIVISION OF ACADEMIC & STUDENT AFFAIRS

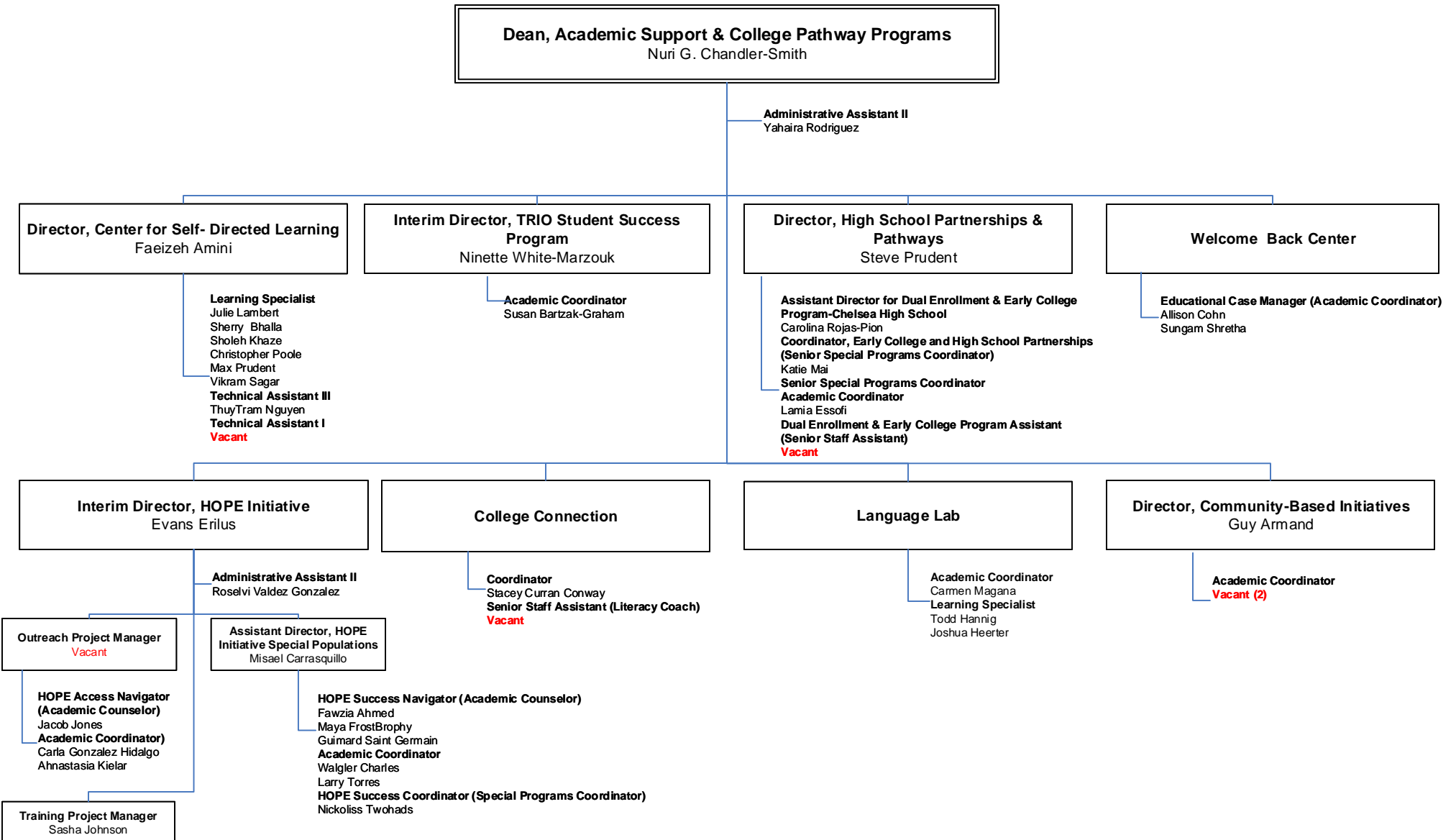
### Student Affairs Organizational Chart #2D



# BUNKER HILL COMMUNITY COLLEGE

## DIVISION OF ACADEMIC & STUDENT AFFAIRS

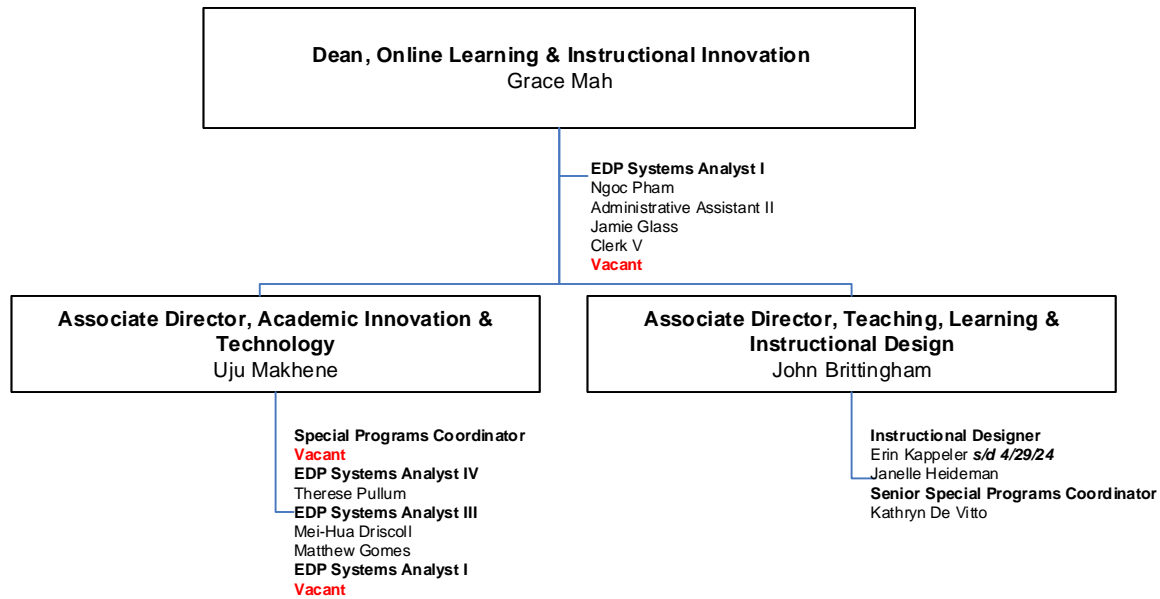
### Academic Support & College Pathway Programs Organizational Chart # 2E



# BUNKER HILL COMMUNITY COLLEGE

## DIVISION OF ACADEMIC & STUDENT AFFAIRS

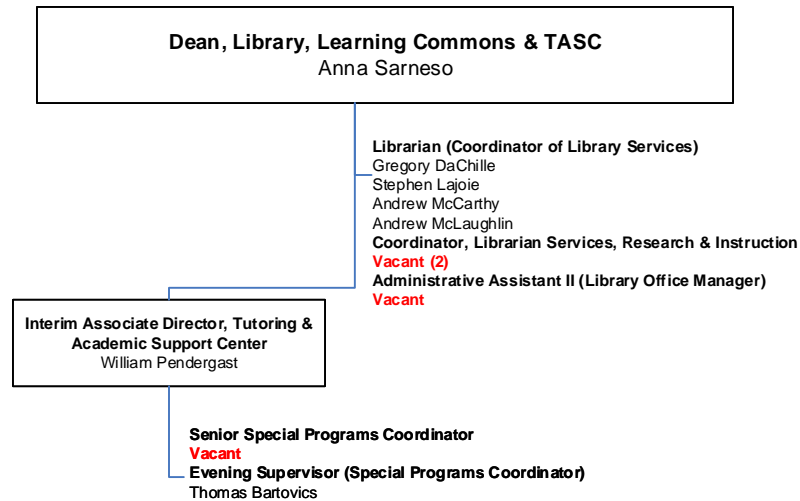
### Online Learning & Instructional Innovation Organizational Chart 2F



# BUNKER HILL COMMUNITY COLLEGE

## DIVISION OF ACADEMIC & STUDENT AFFAIRS

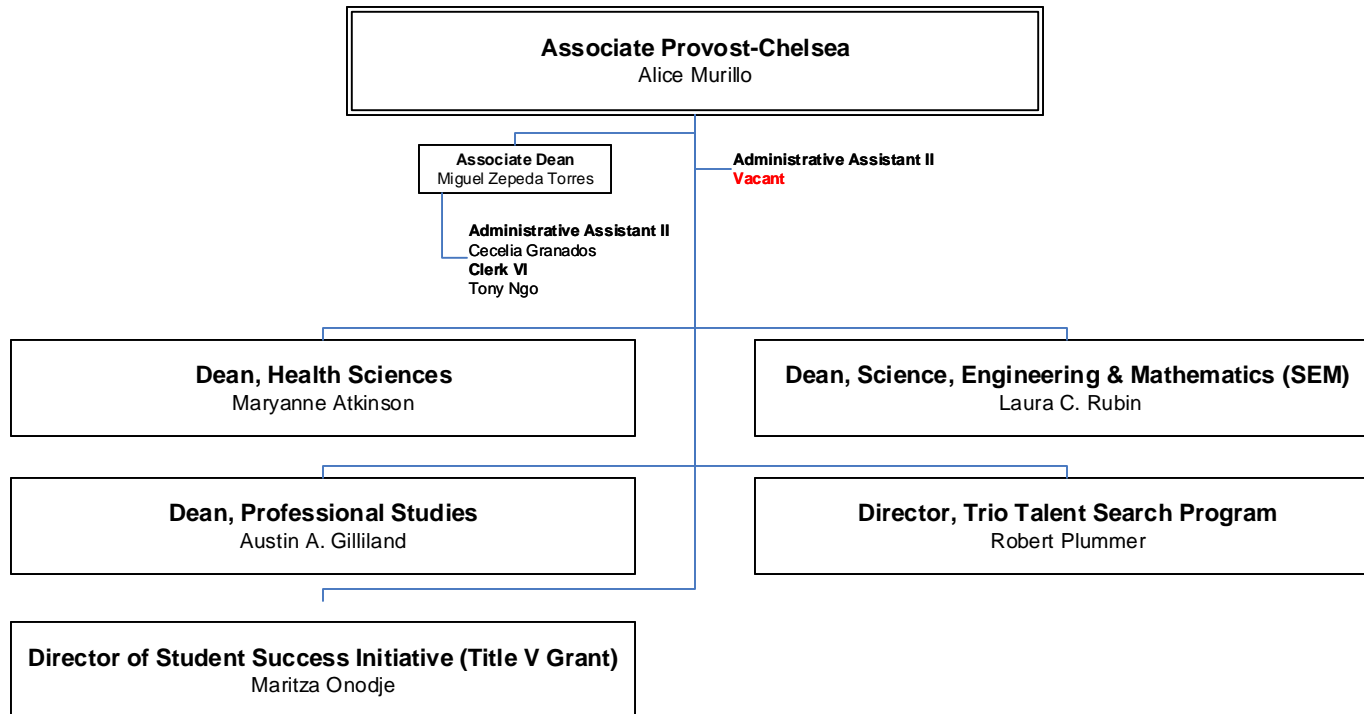
### Library & Learning Commons Organizational Chart #2G



# BUNKER HILL COMMUNITY COLLEGE

## DIVISION OF ACADEMIC & STUDENT AFFAIRS

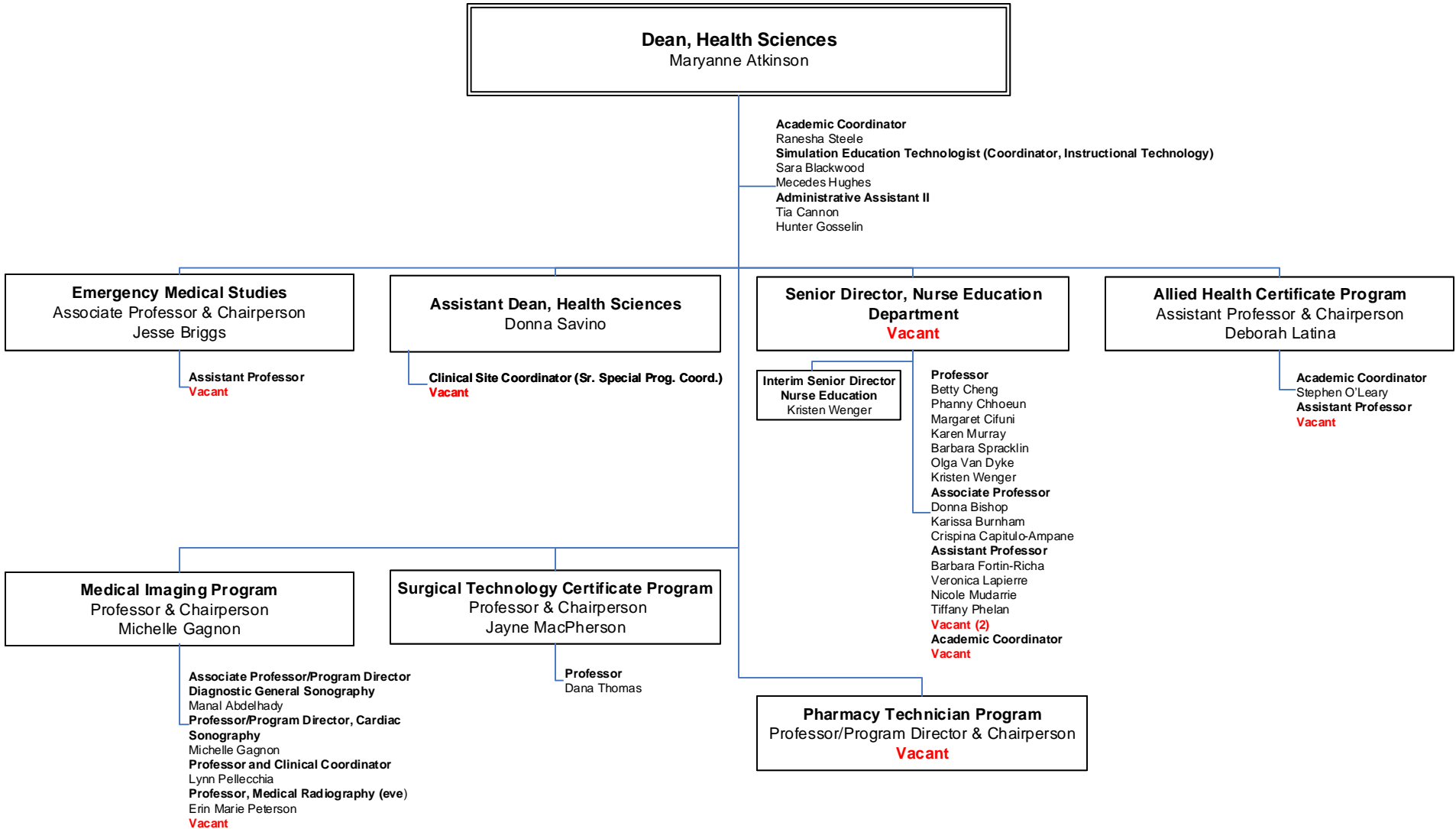
**Associate Provost-Chelsea**  
Organizational Chart 2H



# BUNKER HILL COMMUNITY COLLEGE

## DIVISION OF ACADEMIC & STUDENT AFFAIRS

### Health Sciences Organizational Chart 2I

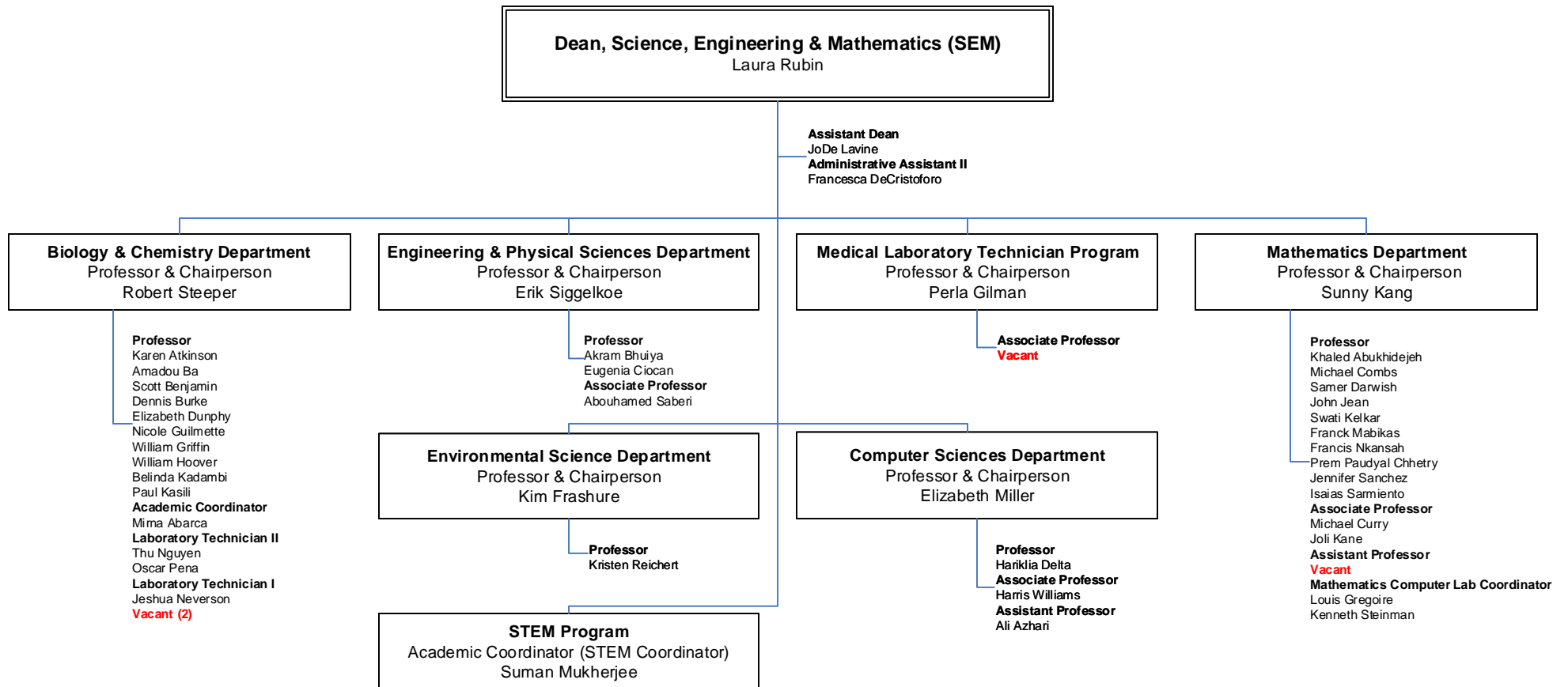




# BUNKER HILL COMMUNITY COLLEGE

## DIVISION OF ACADEMIC & STUDENT AFFAIRS

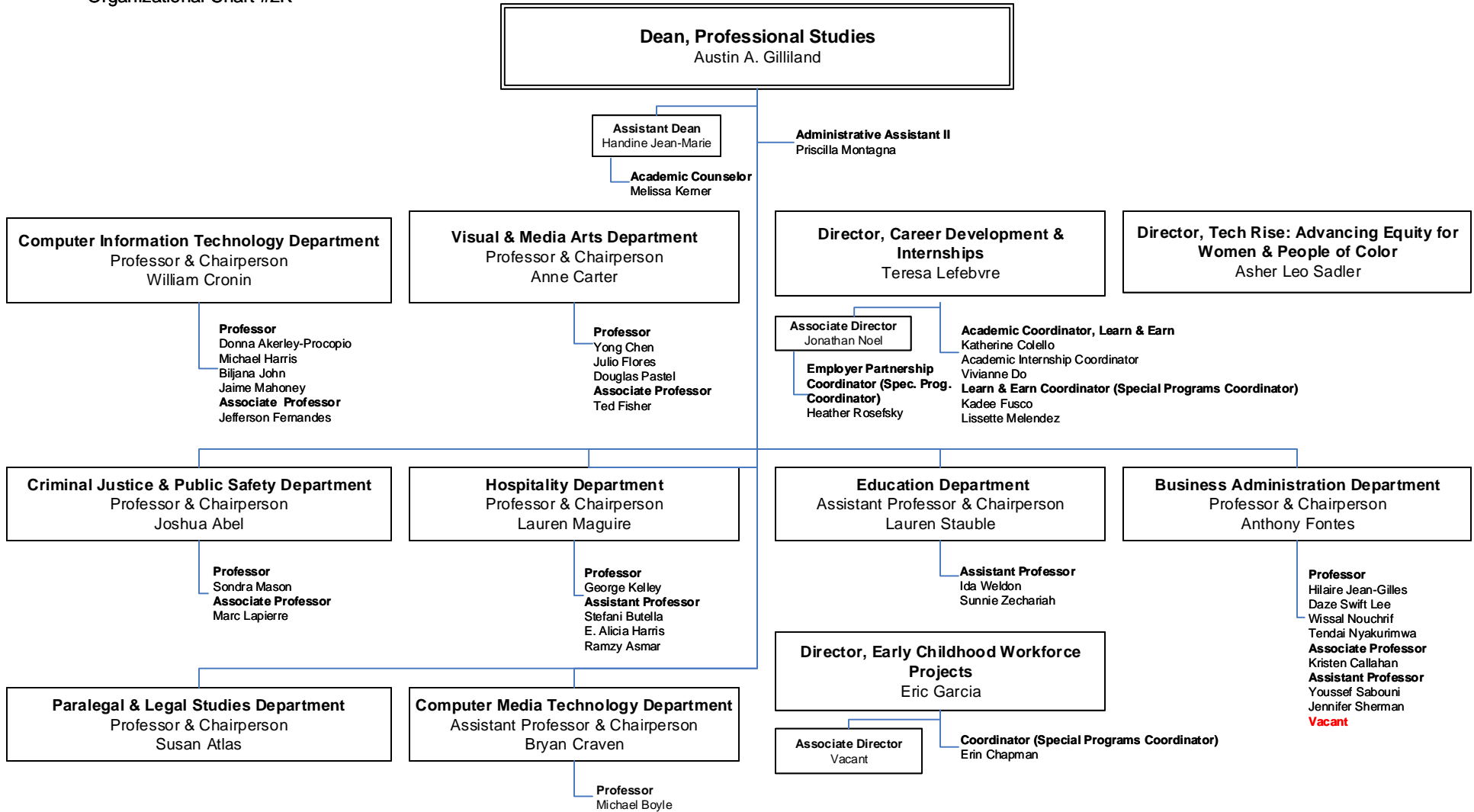
Science, Engineering  
& Mathematics (SEM)  
Organizational Chart #2J



# BUNKER HILL COMMUNITY COLLEGE

## DIVISION OF ACADEMIC & STUDENT AFFAIRS

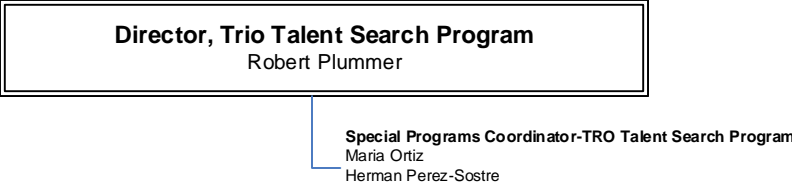
### Professional Studies Organizational Chart #2K



# BUNKER HILL COMMUNITY COLLEGE

DIVISION OF ACADEMIC & STUDENT AFFAIRS

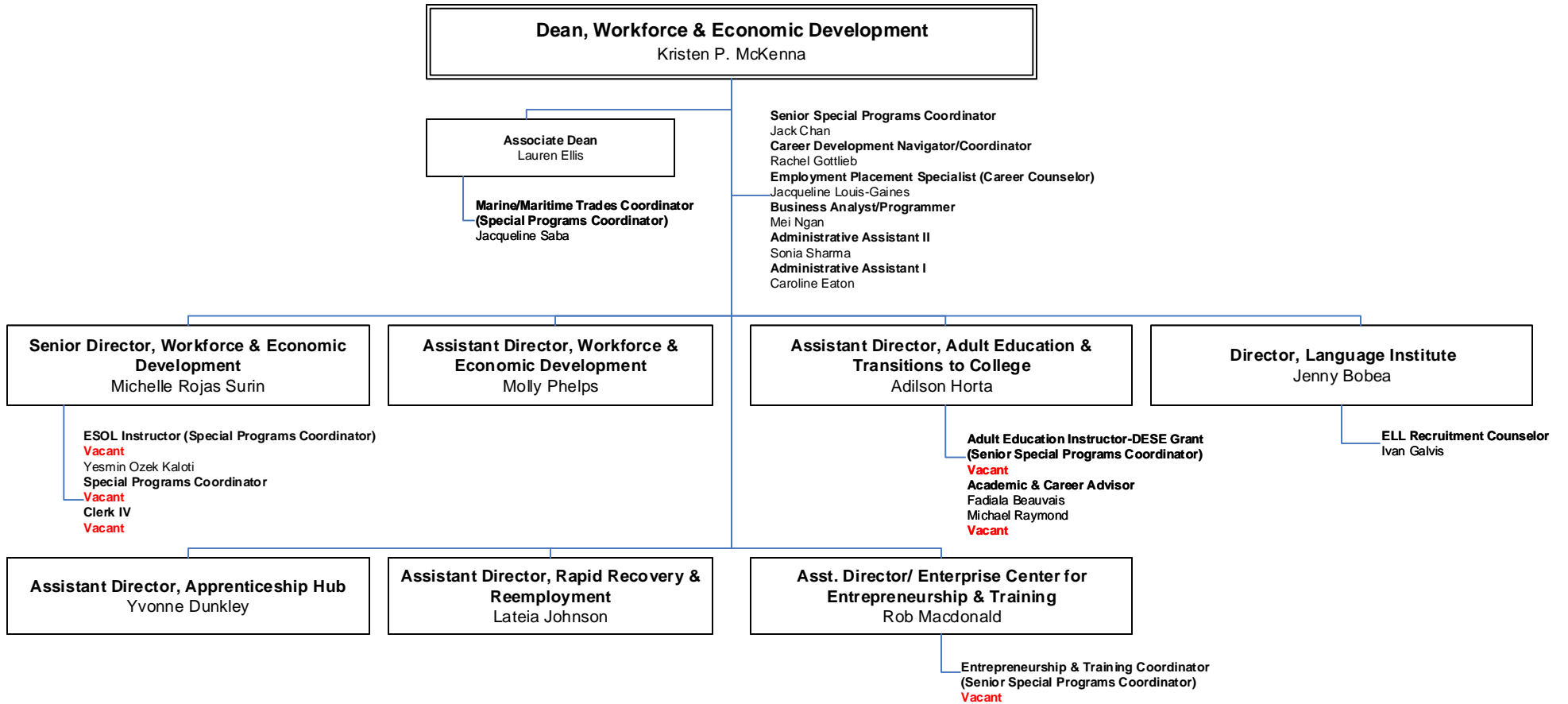
**Trio Talent Search Program**  
Organizational Chart #2L



# BUNKER HILL COMMUNITY COLLEGE

## DIVISION OF ACADEMIC & STUDENT AFFAIRS

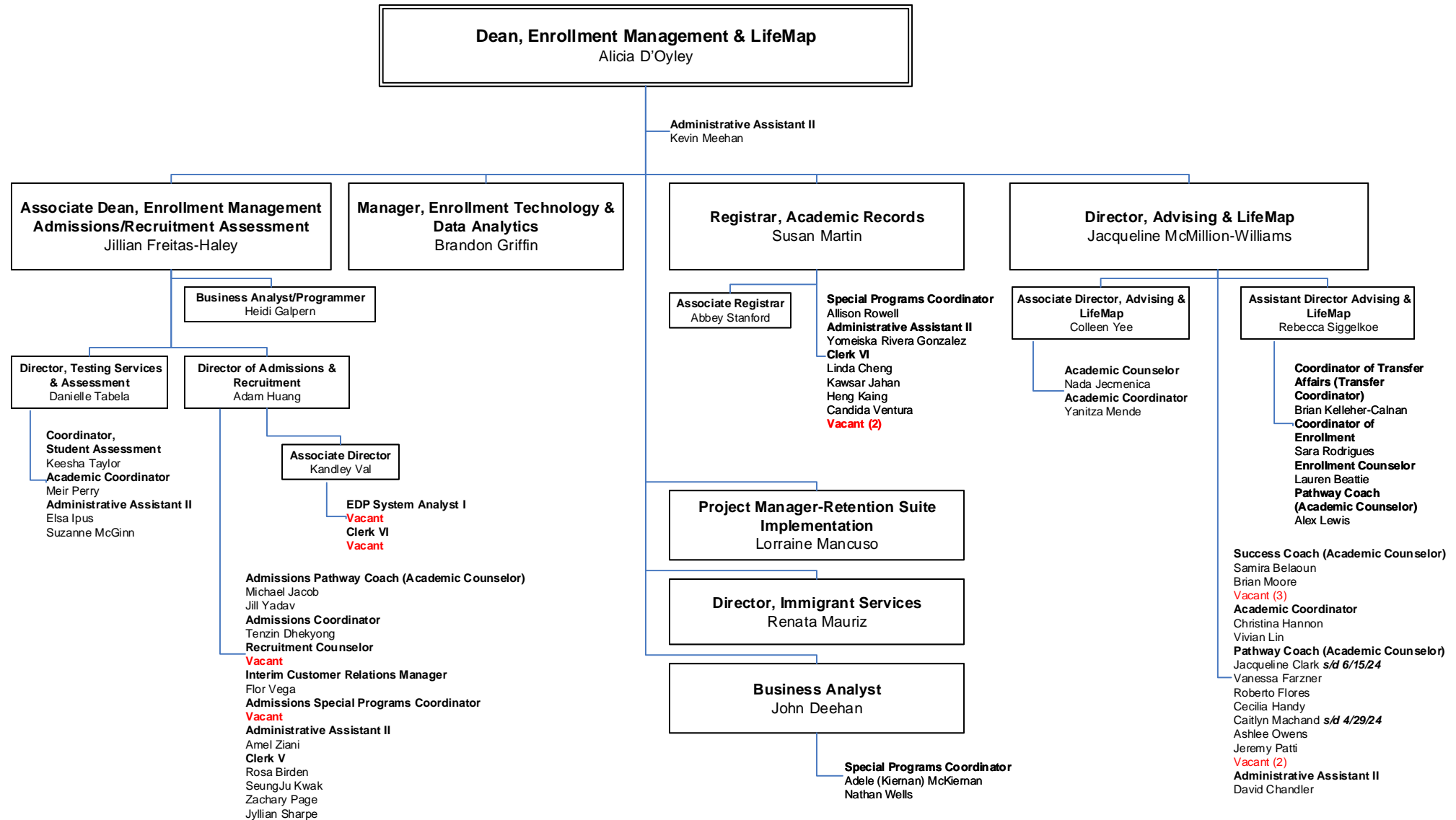
### Workforce & Economic Development Organizational Chart #2M



# BUNKER HILL COMMUNITY COLLEGE

## DIVISION OF ACADEMIC & STUDENT AFFAIRS

### Enrollment Management & LifeMap Organizational Chart 2N

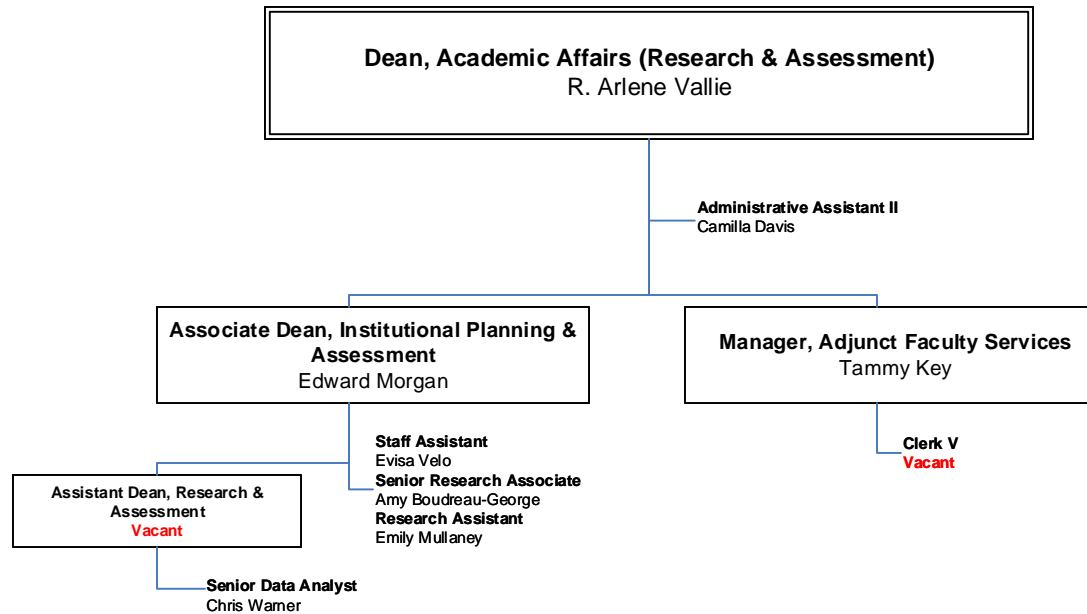


# BUNKER HILL COMMUNITY COLLEGE

## DIVISION OF ACADEMIC & STUDENT AFFAIRS

### Academic Affairs (Research & Assessment)

Organizational Chart #20



# BUNKER HILL COMMUNITY COLLEGE

## DIVISION OF ACADEMIC & STUDENT AFFAIRS

### College Events & Cultural Planning Organizational Chart #2P

