

BOND to begin construction of a controlled access intersection through the Level 1 C-Building corridor. Intersection will be constructed to allow construction access through the B-D courtyard into the new addition courtyard. When the corridor is not in use by construction, two removable wall panels on either side of corridor will be able to be removed up to allow student access through the corridor.

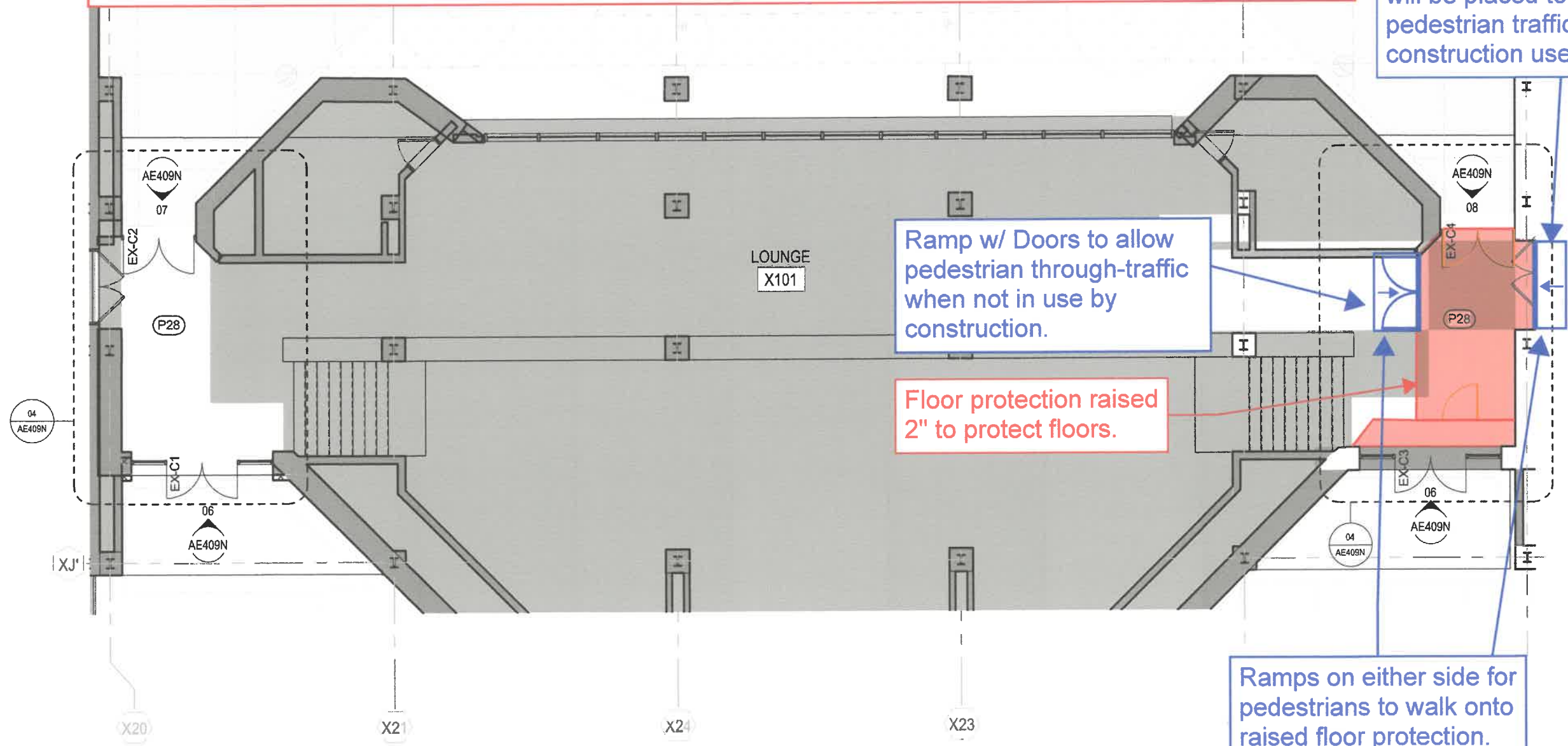
Existing Door to be Removed and Protected.

Removable wall panel will be placed to block pedestrian traffic during construction use.

Ramp w/ Doors to allow pedestrian through-traffic when not in use by construction.

Floor protection raised 2" to protect floors.

Ramps on either side for pedestrians to walk onto raised floor protection.



01 LEVEL 1 - BUILDING C
1/8" = 1'-0"